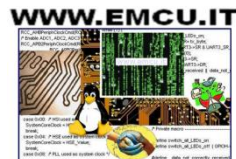




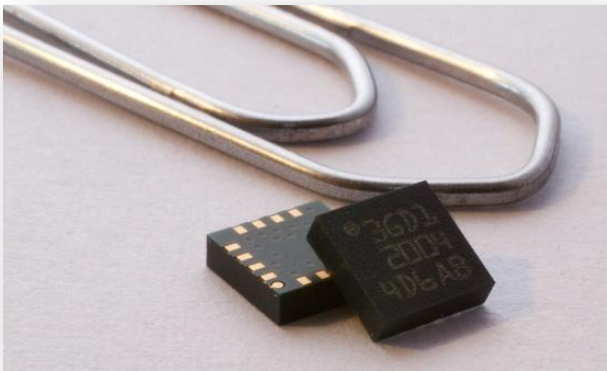
MEMS

Oct. 2012

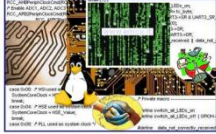
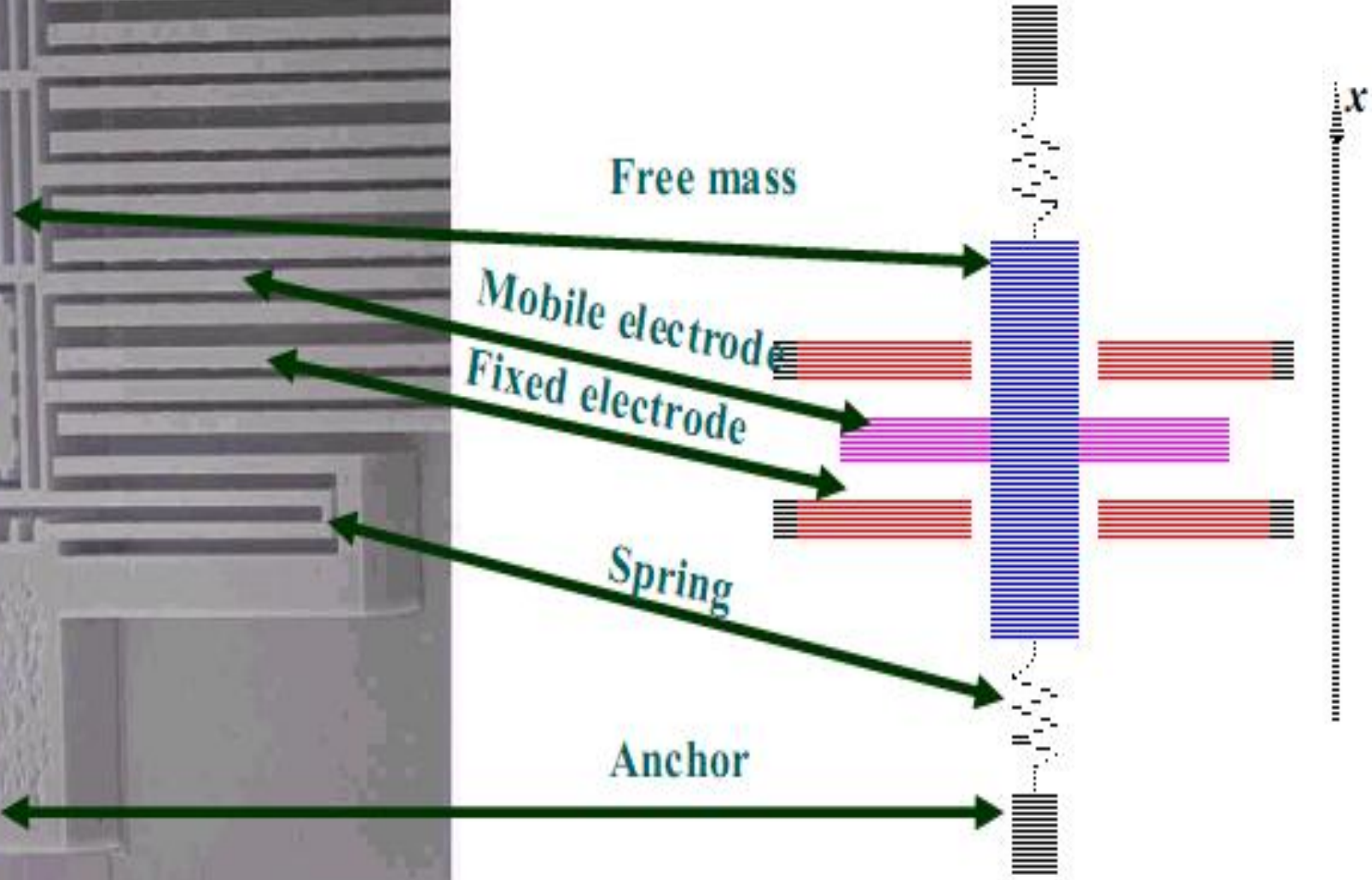
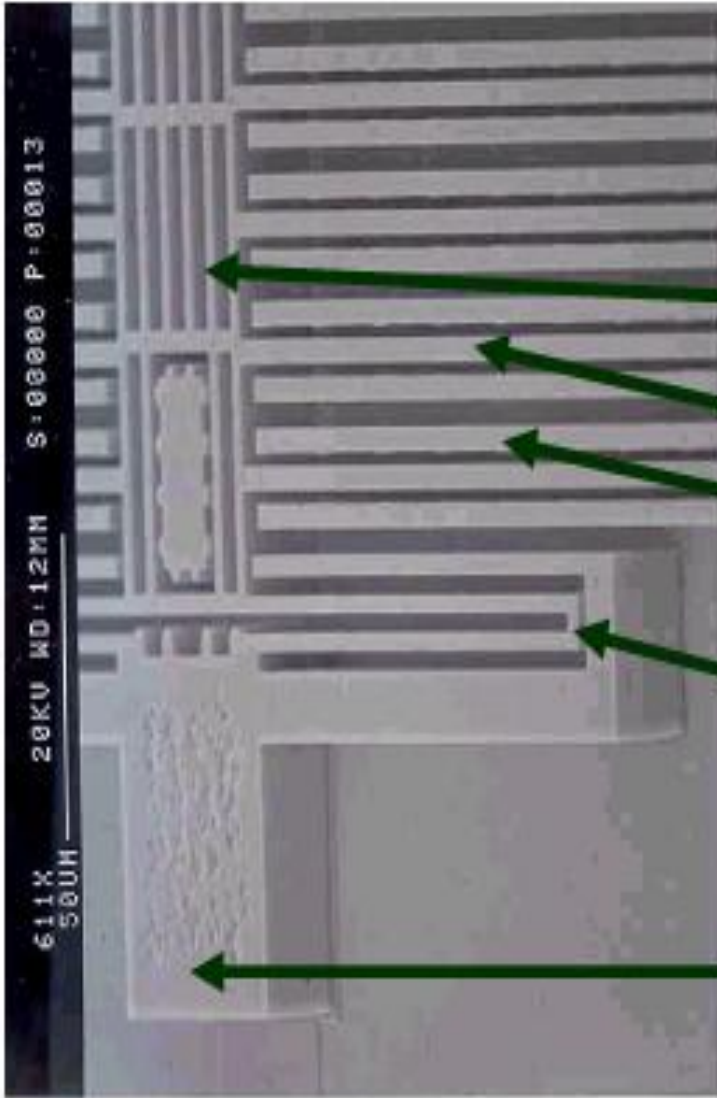


MEMS

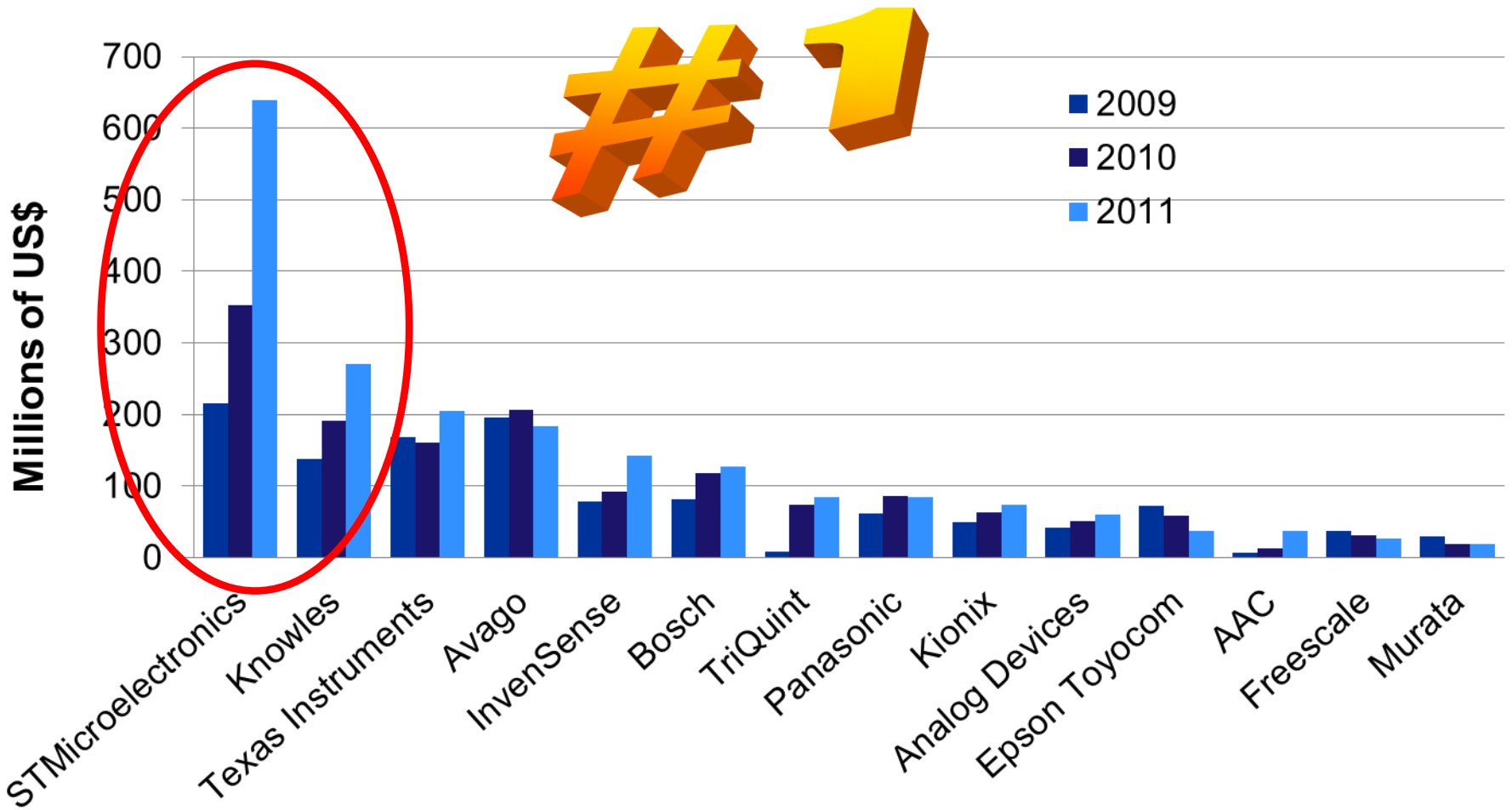
- **MEMS** is an acronym for **M**icro **E**lectro **M**echanical **S**ystems
- They contain 3-dimensional structures realized through a specific process called Micro-Machining
- They are micron-size devices that interact with external world for sensing and actuation



MEMS



MEMS



MEMS

Technology Milestones

7x5mm²

5x5mm²

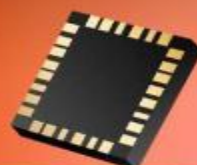
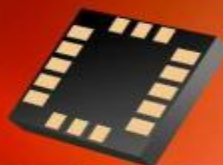
4x5mm²

4x4mm²

3x5mm²

3x3mm²

2x2mm²



1cm

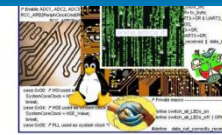
2cm

3cm

4cm

5cm

ST has manufactured more than 2,000M units of Accelerometers, Gyroscopes and eCompass



MEMS

Dedicated 8" MEMS FAB in Milan & Catania

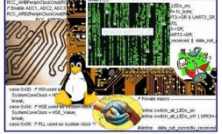
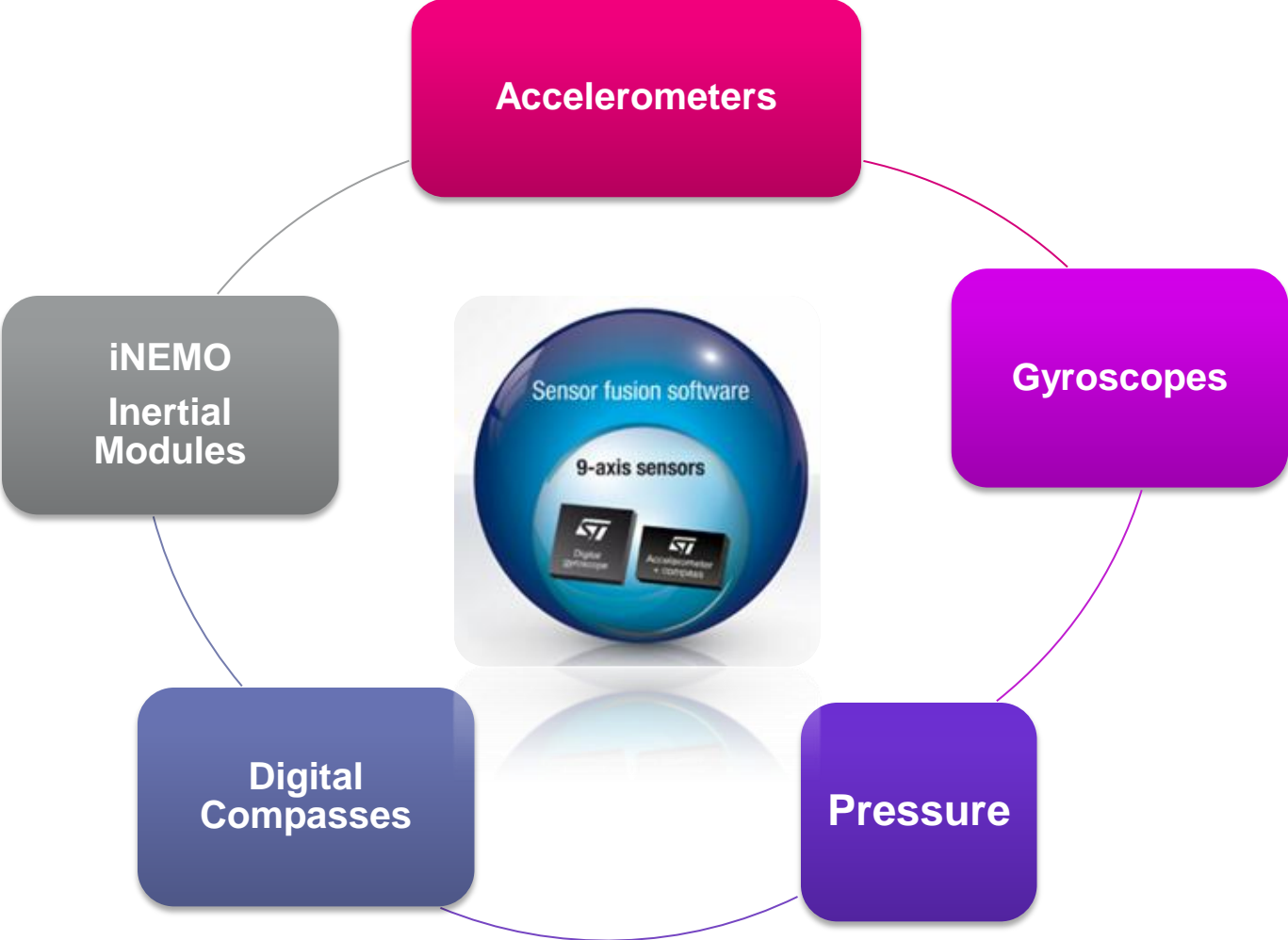


MEMS

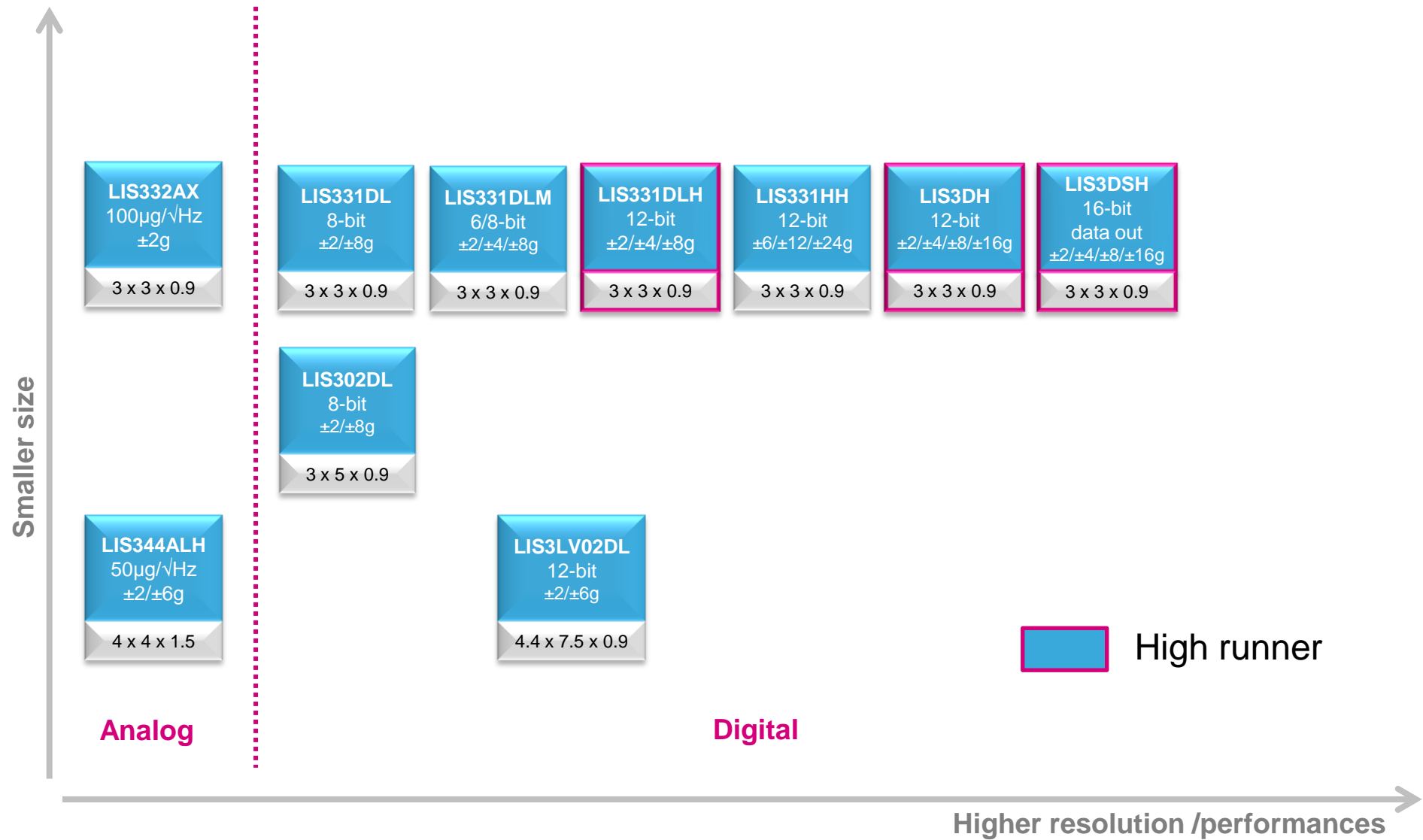
MEMS sensors are commonly used in many consumer and industrial devices to enable motion-based applications



MEMS



MEMS – 3-axis Accelerometers



MEMS High Performance Accelerometers

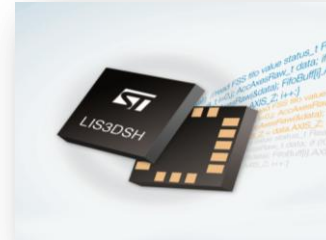
LIS331DLH



FEATURES

- User selectable from $\pm 2g$ up to $\pm 8g$
- 16 bit data output
- Package - 3x3x1mm LGA
- 2 independent programmable interrupt generators for free-fall and motion detection
- Sleep to wake-up function

LIS3DSH



FEATURES

- User selectable form $\pm 2g$ up to $\pm 16g$
- 16-bit data output
- Package - 3x3x1mm LGA
- **Embedded FIFO**
- **Embedded Finite State Machine**
- Higher performances – more functionalities integrated inside the sensor
- Complete customizable motion recognition

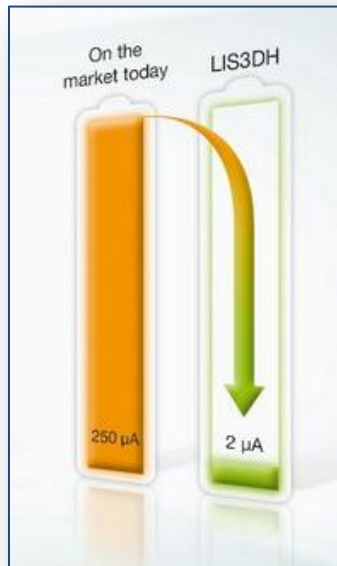
MEMS - Ultra low-power

LIS3DH



FEATURES – High runner

- Selectable Full-scale from $\pm 2g$ up to $\pm 16g$
- High resolution
- Ultra low power consumption
- 4D/6D orientation detection
- Programmable interrupts
- Embedded FIFO
- Power-down and Sleep mode
- Digital Interfaces I2C/SPI
- Small Package 3x3x1 mm LGA



LIS2DH

NEW



FEATURES

- Selectable Full-scale from $\pm 2g$ up to $\pm 16g$
- High resolution
- Ultra low power consumption
- 4D/6D orientation detection
- Programmable interrupts
- Embedded FIFO
- Power-down and Sleep mode
- Digital Interfaces I2C/SPI
- **Small Package 2x2x1 mm LGA**

MEMS - Gyroscopes Portfolio

 High runner

L3G4200D	L3GD20
4 x 4 x 1	4 x 4 x 1

Gaming, Pointing Devices and Navigation

LPY450AL ±500 °/s	LPY4150AL ±1500 °/s	LPY430AL ±300 °/s
4 x 5 x 1	4 x 5 x 1	4 x 5 x 1
LPY403AL ±30 °/s	LPY410AL ±100 °/s	
4 x 5 x 1	4 x 5 x 1	

Analog

Gaming, Pointing Devices and Navigation

LY330ALH ±300 °/s	LY3100ALH ±1000 °/s	LY3200ALH ±2000 °/s
3 x 5 x 1	3 x 5 x 1	3 x 5 x 1

Analog

Gaming, Pointing Devices and Navigation

Smaller size

MEMS - L3GD20 3-Axis D-Gyroscopes

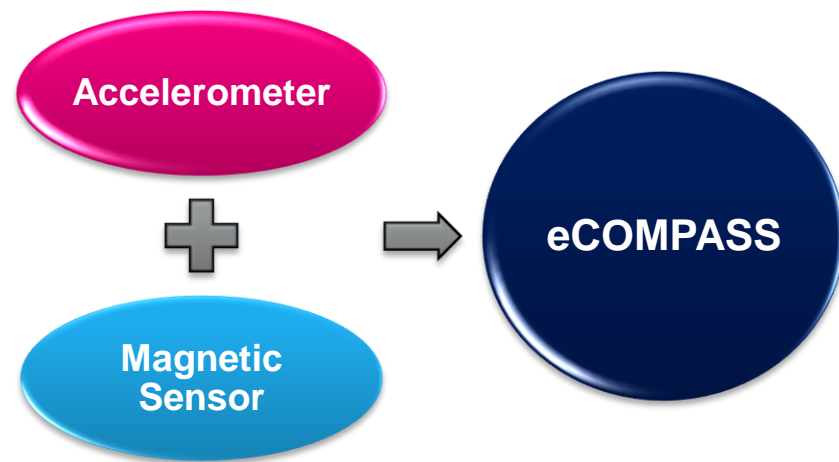
L3GD20 Features



- ❖ Selectable Full Scale from ± 250 up to ± 2000 dps
- ❖ Any supply voltage over the range of 2.4 to 3.6V
- ❖ Programmable interrupts
- ❖ Digital Interfaces I2C/SPI
- ❖ Embedded Power-down and sleep modes
- ❖ Embedded FIFO
- ❖ It integrates low- and high-pass filters with user-selectable bandwidth
- ❖ Temperature sensor
- ❖ LGA Package 4x4x1mm

Gyroscope Development Roadmap: More features in smaller packages

MEMS - eCompass



Integration of different sensors in the same package

- More compact, robust and easy-to-assemble solutions
- Superior stability over time and temperature
- Particularly suitable for applications such as location-based services, pedestrian dead reckoning, map/display orientation, and direction finding

MEMS - LSM303DLHC – 3-axis XL + 3-axis Mag



LSM303DLHC Features

- ❑ **Magnetometer Specification**
 - ❑ 3-axis Magnetometer
 - ❑ FS from ± 1.3 gauss up to ± 8.1 gauss
- ❑ **Accelerometer Specification**
 - ❑ 3-Axis Digital Output (I2C)
 - ❑ FS from $\pm 2g$ up to $\pm 16g$
- ❑ **6 DOF Module Package**
 - ❑ I2C Interface & Programmable Interrupts
 - ❑ Operating current consumption $< 100 \mu A$

Advantages

- ❑ **Space-Saving** with LGA 3x5x1 mm
- ❑ **Power- Saving** Operating consumption $< 100 \mu A$
- ❑ **Magnetic sensing resolution: 2m Gauss**

MEMS - Pressure

The **LPS331AP** is an ultra compact absolute piezoresistive pressure sensor. It includes a monolithic sensing element and an IC interface able to take the information from the sensing element and to provide a digital signal to the external world.

Key Features

- 260 to 1260 mbar absolute pressure range
- High-resolution mode: 0.020 mbar RMS
- Low power consumption:
 - Low resolution mode: 5.5 μ A
 - High resolution mode: 30 μ A
- High overpressure capability: 20x full scale
- Embedded temperature compensation
- Embedded 24-bit ADC
- Selectable ODR from 1 Hz to 25 Hz
- SPI and I2C interfaces
- Supply voltage: 1.71 to 3.6 V
- High shock survivability: 10,000 g
- Small and thin package
- ECOPACK® lead-free compliant



HCLGA-16L
(3 x 3 x 1 mm)

MEMS - iNEMO System In Package



Accelerometer

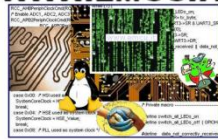
Gyroscope



iNEMO Inertial Modules

LSM330DLC Features

- ❑ **Gyroscope Specification**
 - ❑ 3- axis Digital Output (I2C/SPI)
 - ❑ FS from ± 250 dps up to ± 2000 dps
 - ❑ Programmable Interrupts
- ❑ **Accelerometer Specification**
 - ❑ 3- Axis Digital Output (I2C/SPI)
 - ❑ FS from ± 2 g up to ± 16 g
 - ❑ Programmable Interrupts
- ❑ Module Package 4x5x1 mm LGA



MEMS - iNEMO System In Package

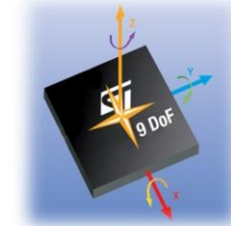
6-Axis family



FEATURES

- 3-Axis Accelerometer + 3-Axis Digital Gyro
- Advanced digital features embedded
- High accuracy of the sensing axis alignment
- High stability over temperature
- LGA package – up to 10,5mm²

9-Axis family



NEW

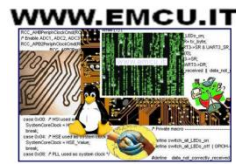
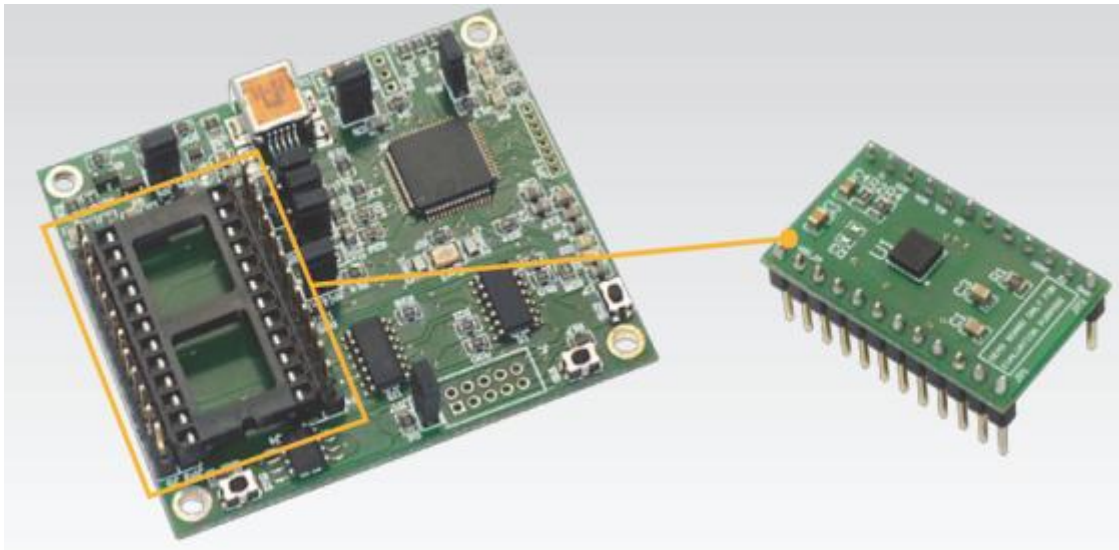
FEATURES

- 3-Axis Accelerometer + 3-Axis Gyro + 3-Axis Magnetometer
- Smart power management
- Advanced design for easy user system integration
- LGA package – up to 16mm²
- **Device Status Preview**



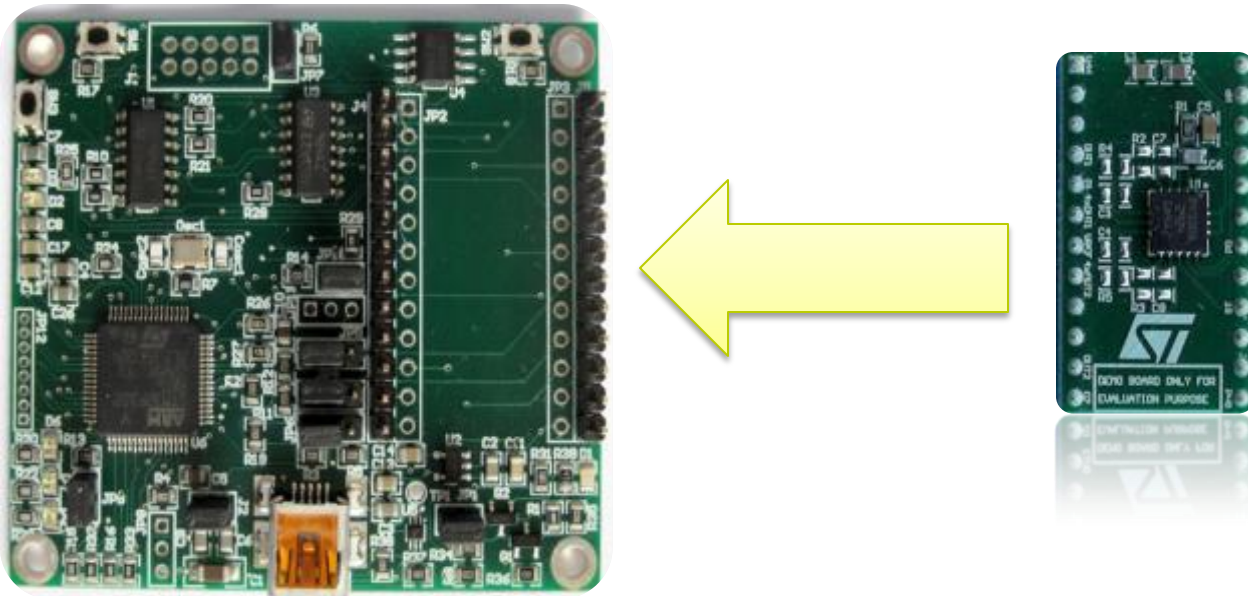
MEMS - *Evaluation Tools*

Oct. 2012



MEMS – Eva-Board

- New generation of MEMS demonstration board
- ST MEMS motherboard based on STM32
- Compatible with all ST MEMS adapters



Order code: [STEVAL-MKI109V2](#)

MEMS - Eva-Board

STEVAL-MKI119V1 == STEVAL-MKI109V2 + STEVAL-MKI108V2 (9-axis)

- Ready to support iNemoEngine_PW8
- Controlled by the STM32F103 high performance ARM 32-bit Cortex™-M3 CPU
- DFU compatible for USB microprocessor firmware update
- L3GD20 and LSM303DLHC 9 axis module designed to be plugged into a standard DIL24 socket

Order code: [STEVAL-MKI119V1](#)



STEVAL-MKI109V2



STEVAL-MKI108V2

MEMS – Eva-Board SW



http://www.emcu.it/MEMS/MEMS.html#Accelerometer_eva-board