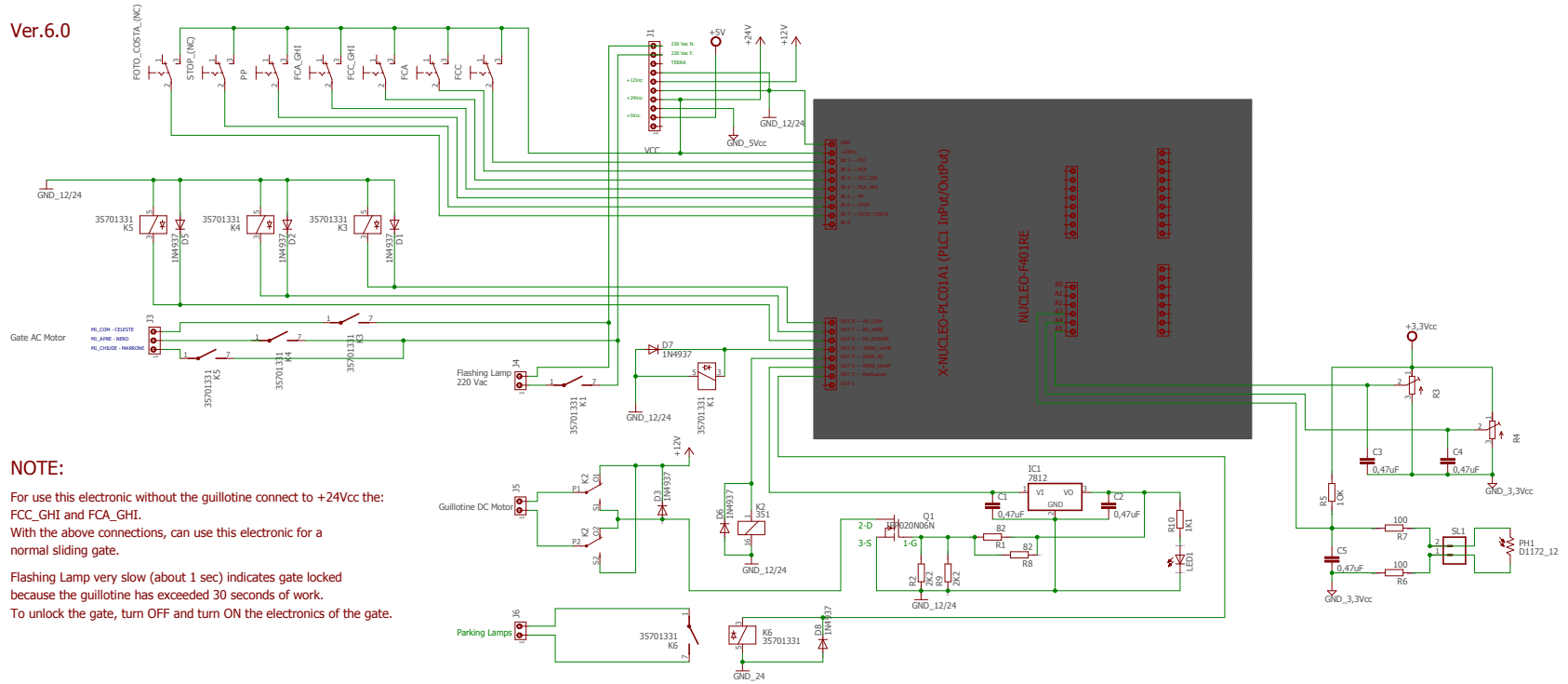


Ver.6.0



NOTE:

For use this electronic without the guillotine connect to +24Vcc the FCC_GHI and FCA_GHI.
 With the above connections, can use this electronic for a normal sliding gate.

Flashing Lamp very slow (about 1 sec) indicates gate locked because the guillotine has exceeded 30 seconds of work.
 To unlock the gate, turn OFF and turn ON the electronics of the gate.