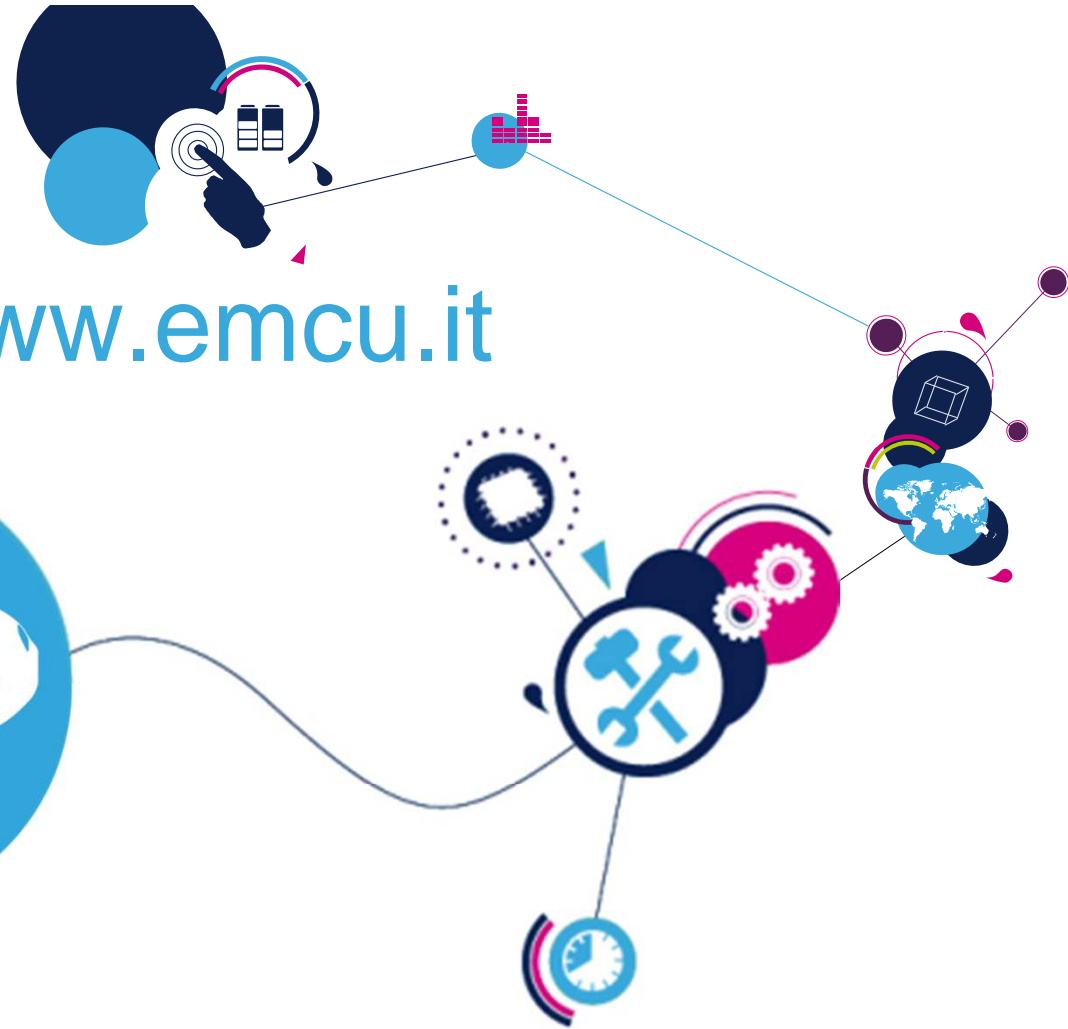
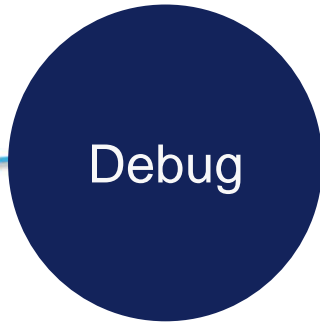
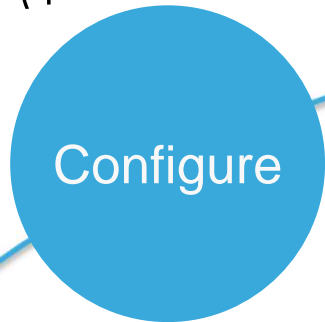


SPC5Studio --- www.emcu.it

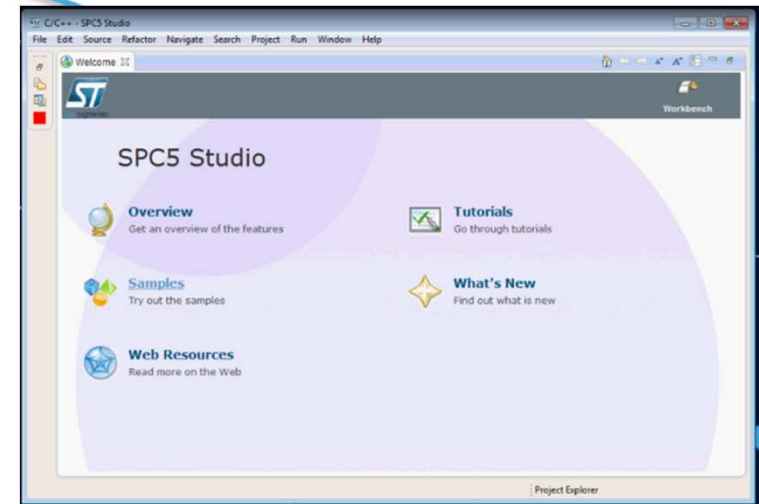
Plug & Develop
Applications for SPC56
32bit Automotive MCU



SPC5Studio



Application IDE



Built on Eclipse IDE:

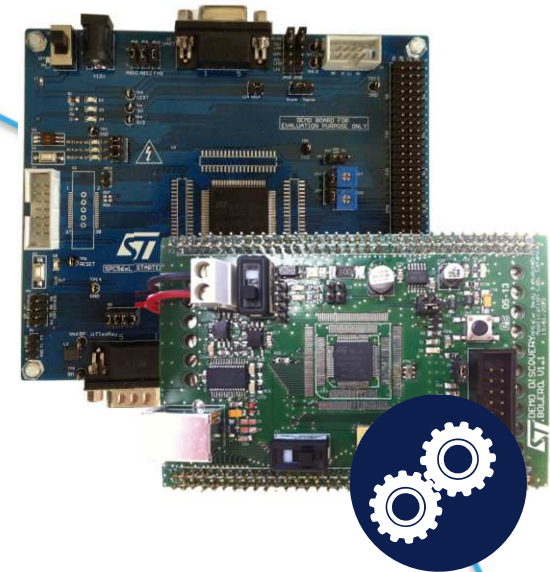
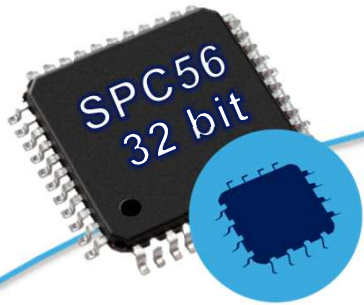


- Industry standard
- Open platform
- High flexibility

In collaboration with: ChibiOS, HighTec EDV, PLS



Environment



- SPC56 32bit MCUs
- Board Support Packages for all MCU lines
- PLS USB/JTAG Adapter
- Discovery kits

Save more
than

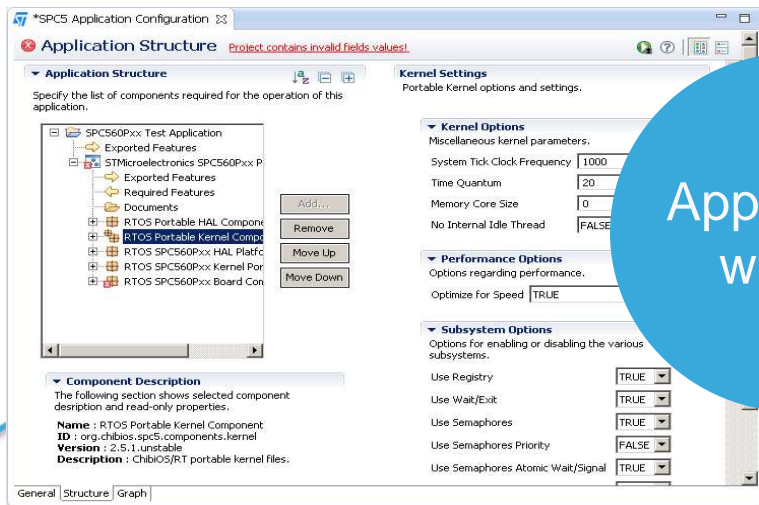
80%

- time
- resources

Intuitive

Evaluation
Development
Production

- Low cost dedicated tool for SPC56 MCUs
- Quick development
 - no more syntax error
 - no more reading manuals
- A unique tool for evaluation, development, production



Visual interface

5



Easily configure complex projects with:

- Application wizard
- Low Level Drivers library
- I/O Pin Mapping
- FreeMarker based source code generation

st.com/spc5studio



Online now:

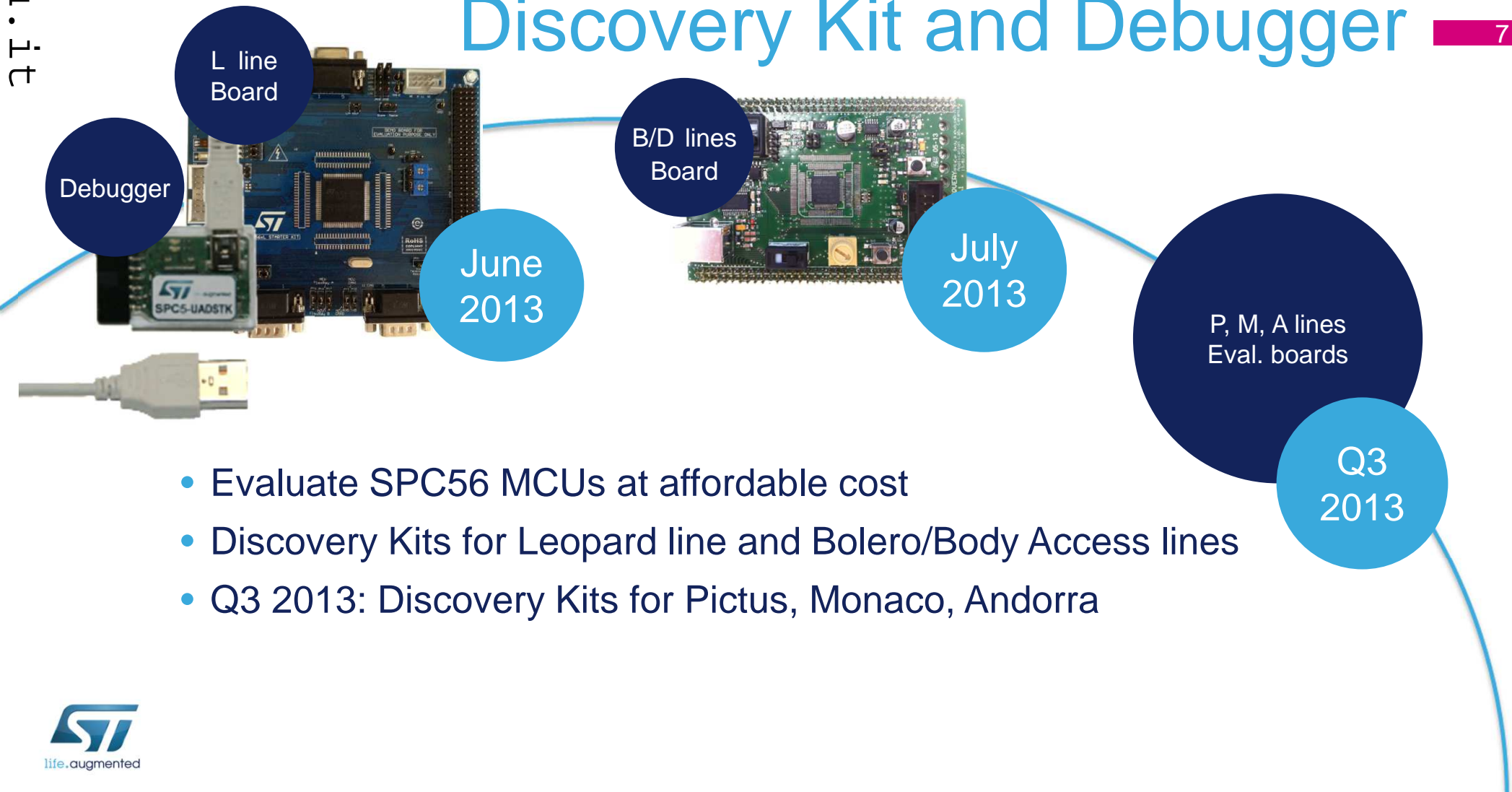
- BSP for Bolero, Gateway, Pictus, Monaco lines
- Application wizard
- Low Level Drivers
- Real time Operating System

Free
Download

Next updates Q2 2013:

- BSP for Leopard, Andorra, Body lines
- Visual pin out mapping wizard
- Application demo available online

Discovery Kit and Debugger



e2e Community



Talk

Develop

Share

- Join the SPC5Studio e2e community on my.st.com
- Meet other engineers developing with the same tool to:
 - Discuss your needs
 - Share your own solutions
 - Download other contributors' solutions

st.com/spc5studio

www.emcu.it

my.st.com

www.emcu.it

www.emcu.it

www.emcu.it

