

BlueCoin, the Robotic Ear

Audio and Sensor Platforms R&D

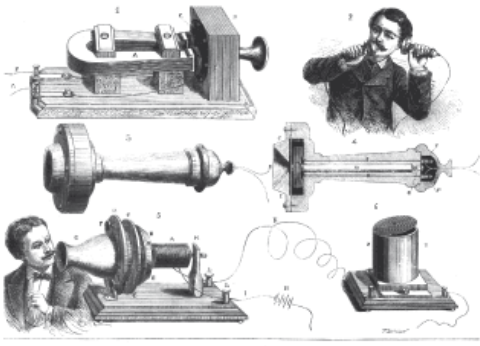
AST – Central Labs



Voice Communication

a key driver of innovation since 1800's

2

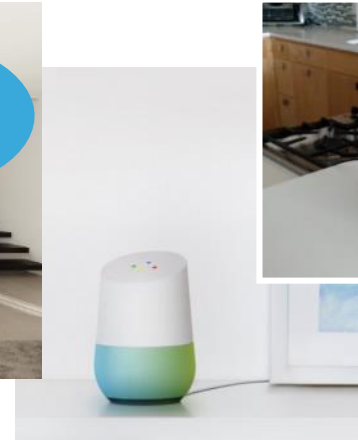


IoT evolution of Voice Automation: the IoT voice assistant

3



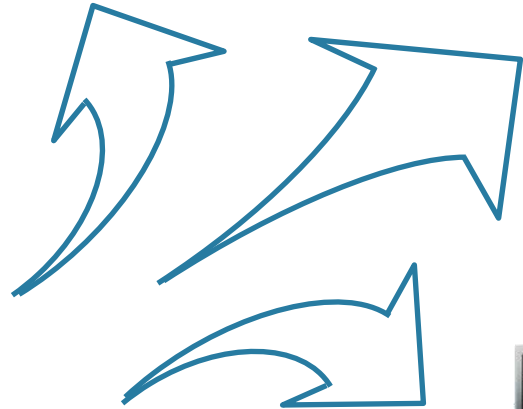
...to Smart Mobiles



...to “Anything Connectable”



From professional
PC applications

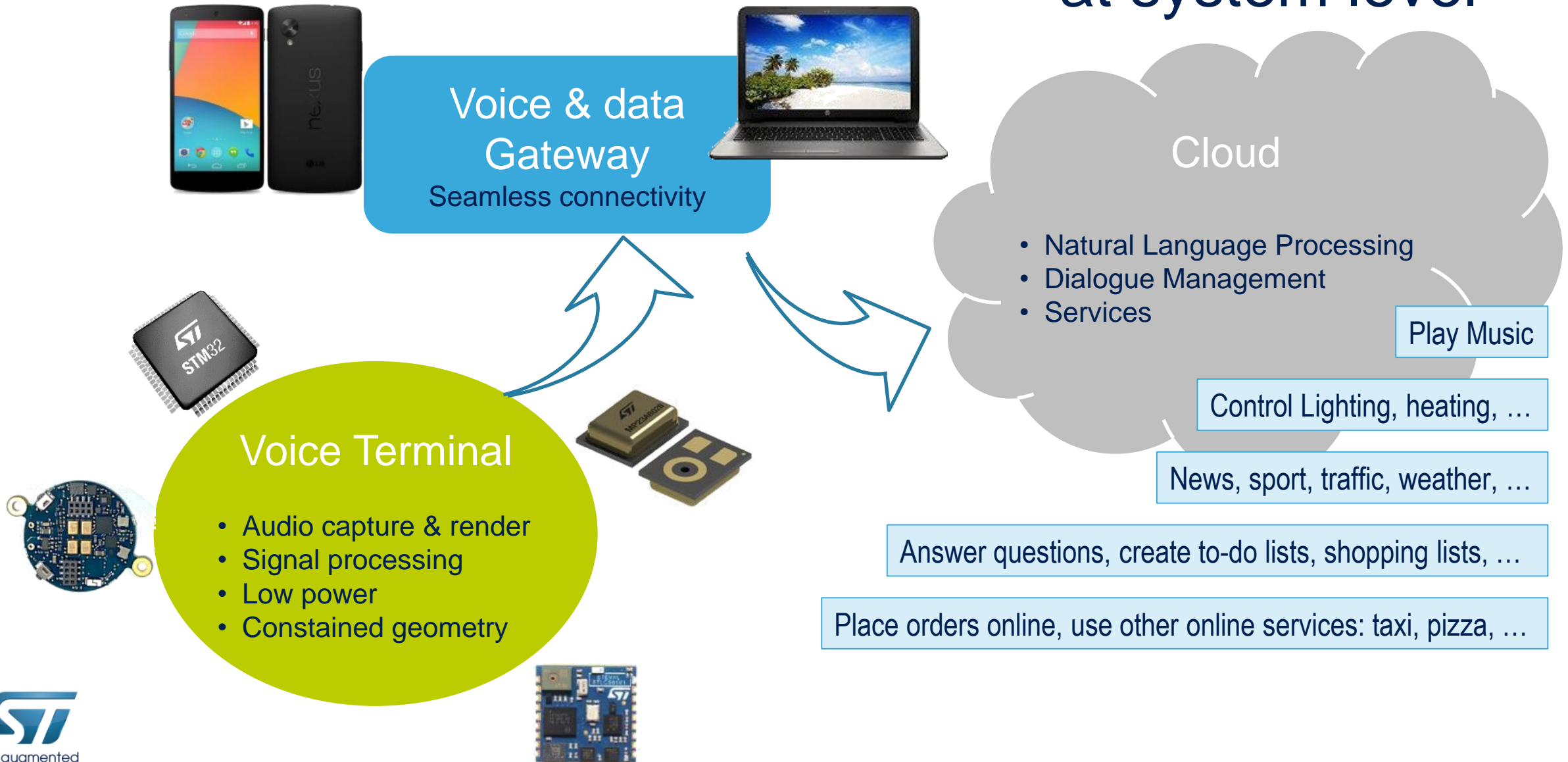


...to Home / Office
Terminals



MEMS microphones and Audio Quality at system level

4



BlueCoin



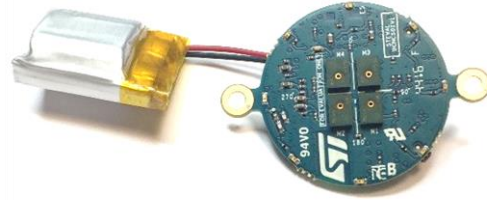
Coming in June 2017

BlueCoin: the Robotic Ear

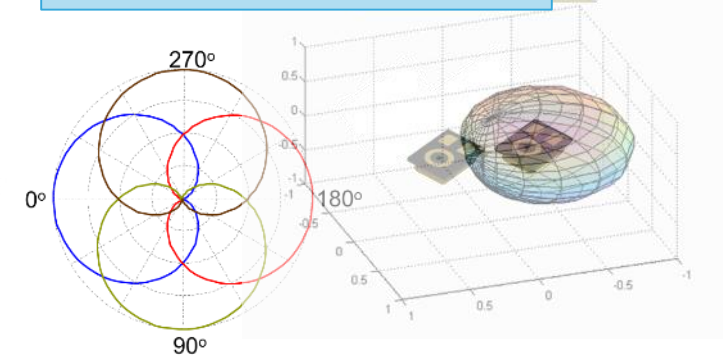
6

Augmented hearing plus range, environmental and motion sensing

Motion, Activity
and Balance



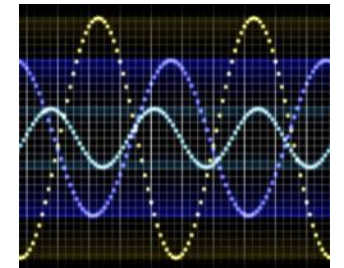
Acoustic Beamforming



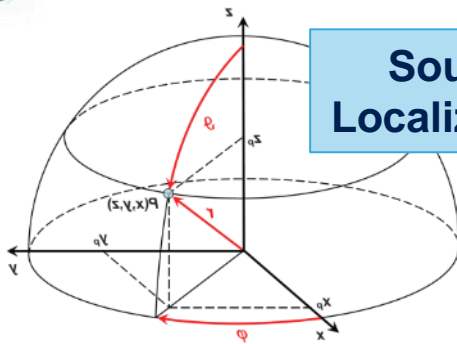
Voice over
Bluetooth Low Energy



Embedded Processing



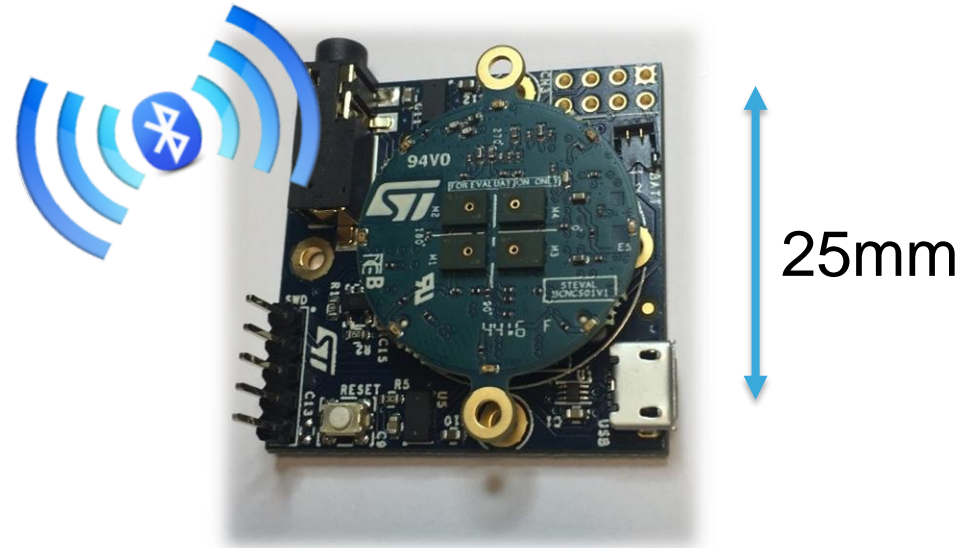
Sound
Localization



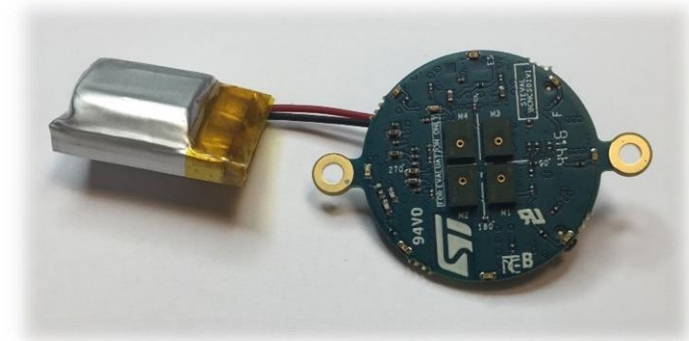
BlueCoin: the Robotic Ear

Features

- Advanced audio processing
 - Sound Source Localization
 - Beamforming
- Wide band audio over BLE (BlueVoice)
- Advanced Audio and ToF User Interaction
- Sensor fusion
 - Inertial, environmental, acoustic, optical (Time of Flight)
- Complete development kit
 - SW Compatible with STM32 ODE
 - CoinStation + small Cradle



BlueCoin + battery



Coming in June 2017

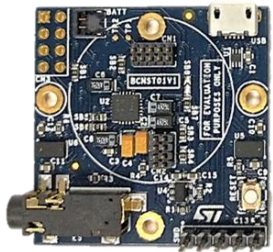
STEVAL-BCNKT01V1 - BlueCoin Starter Kit

8

Programming development kit

CoinStation

Programming cable



BlueCoin Starter kit

Augmented acoustics and motion sensing development and prototyping platform



Standalone mode bundle



BLUECOIN



BATTERY



CRADLE

Programming development kit



COINSTATION



PROGRAMMING CABLE

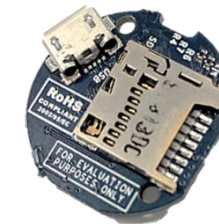
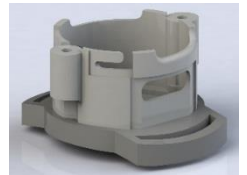


PLASTIC BOX

Standalone mode bundle

BlueCoin Cradle

Plastic Box



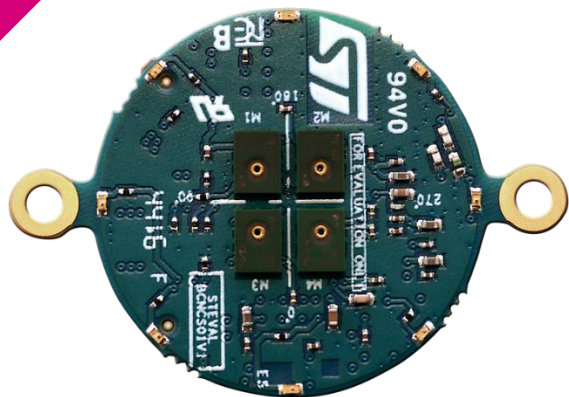
LiPo Battery



Coming in June 2017

STEVAL-BCNCS01V1 - BlueCoin

9



Sensors



Motion
MEMS



MEMS
Microphones



Environmental
MEMS



LSM6DSM
LSM303AGR



LPS22HB



MP34DT04

High-Performance MCU



High-performance
Brain



STM32F4

Ultra-Low-Power connectivity



Bluetooth
Low-energy



BlueNRG-MS

Time-Of-Flight ranging



Flight
Sense



VL53L0x

Power Management



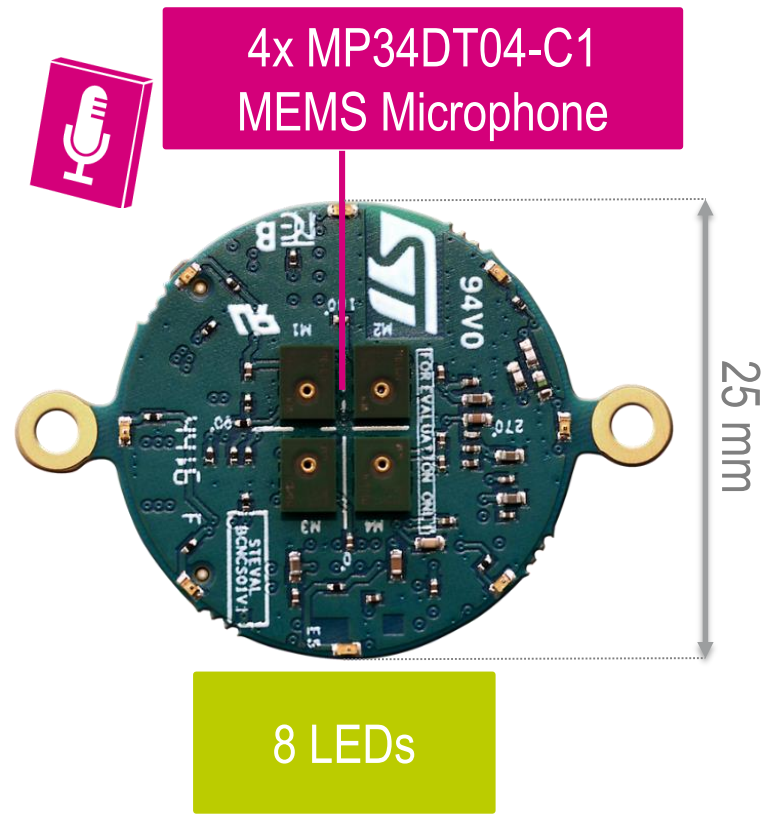
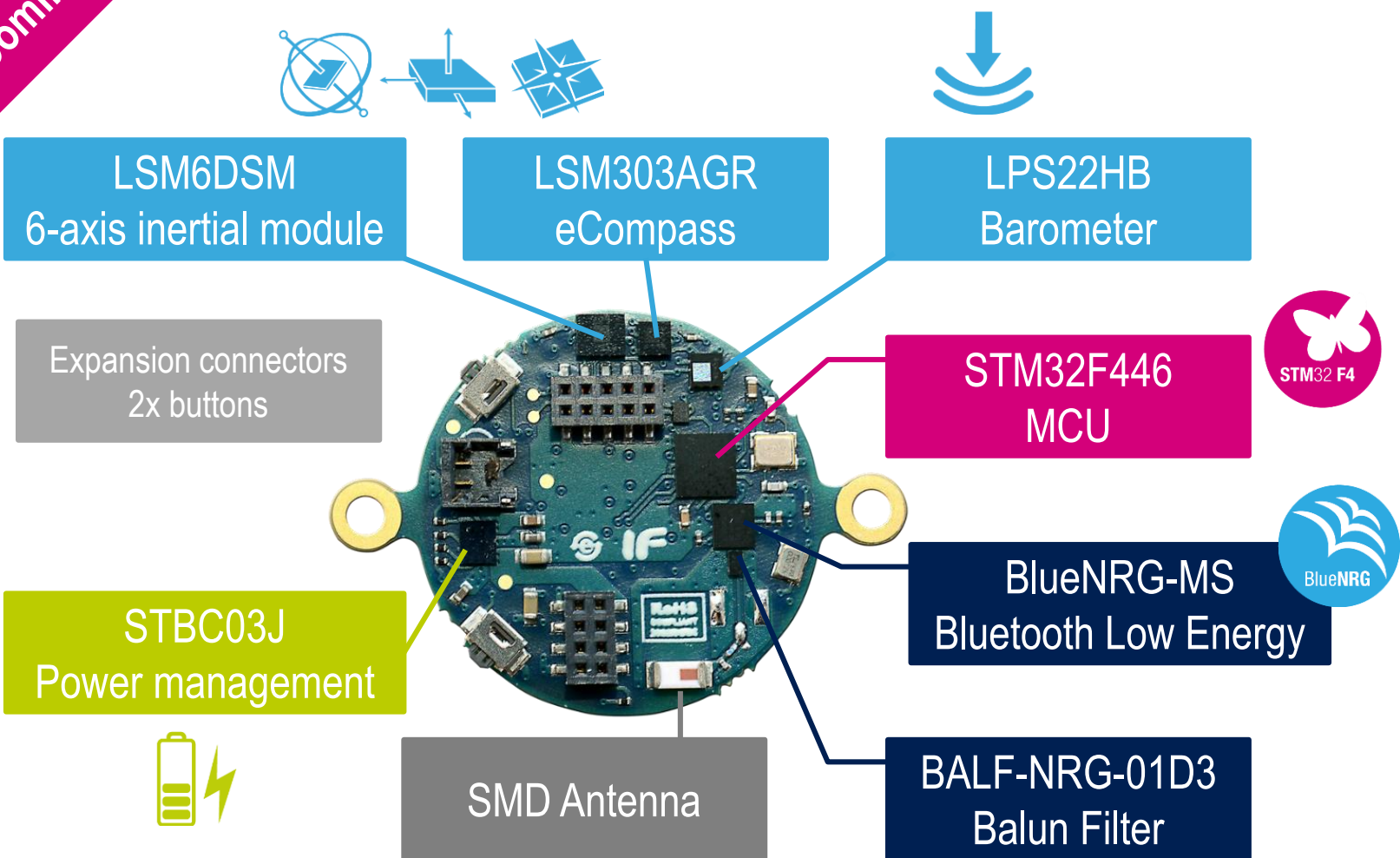
Battery
Charger



STBC03J

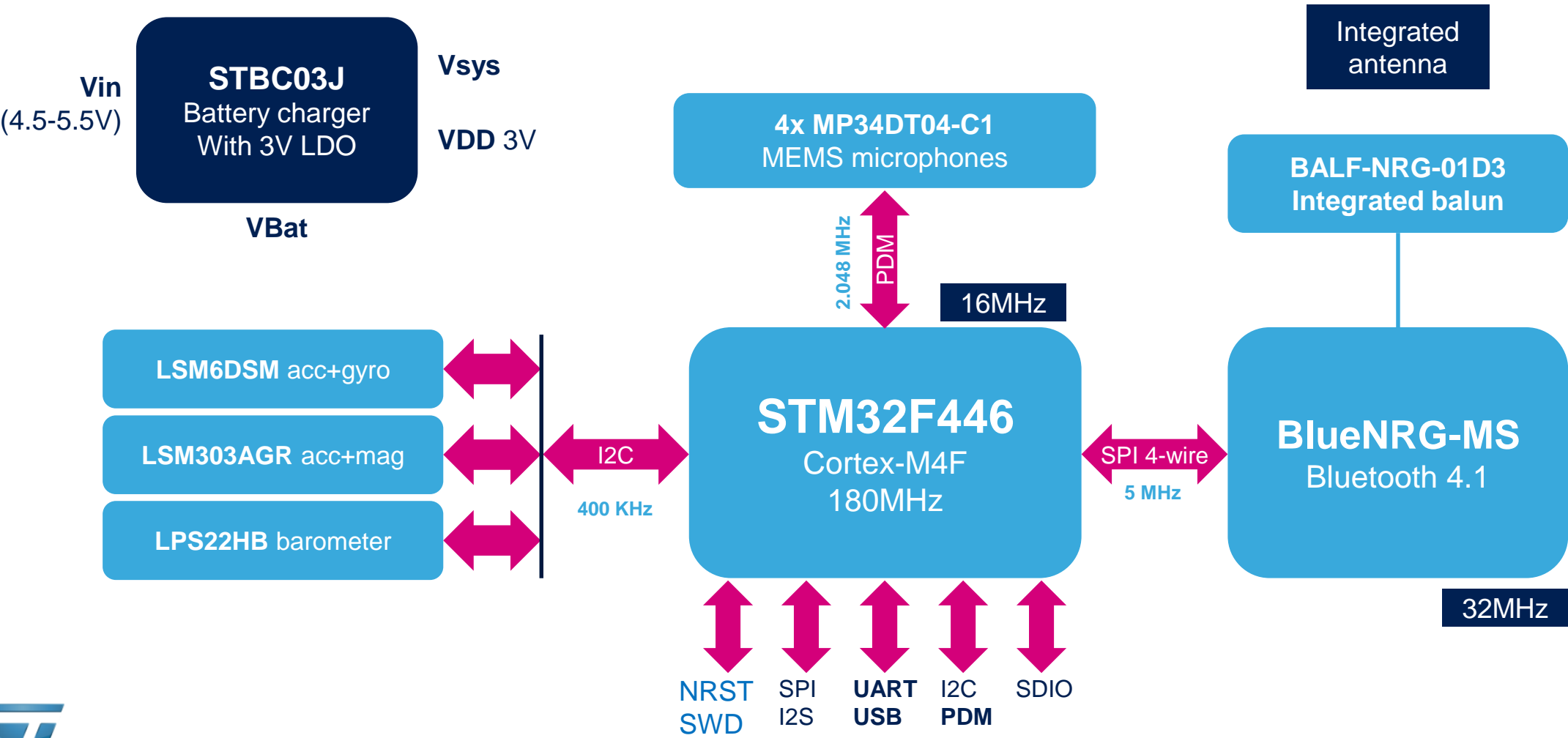
Coming in June 2017

STEVAL-BCNCS01V1 - BlueCoin



Coming in June 2017

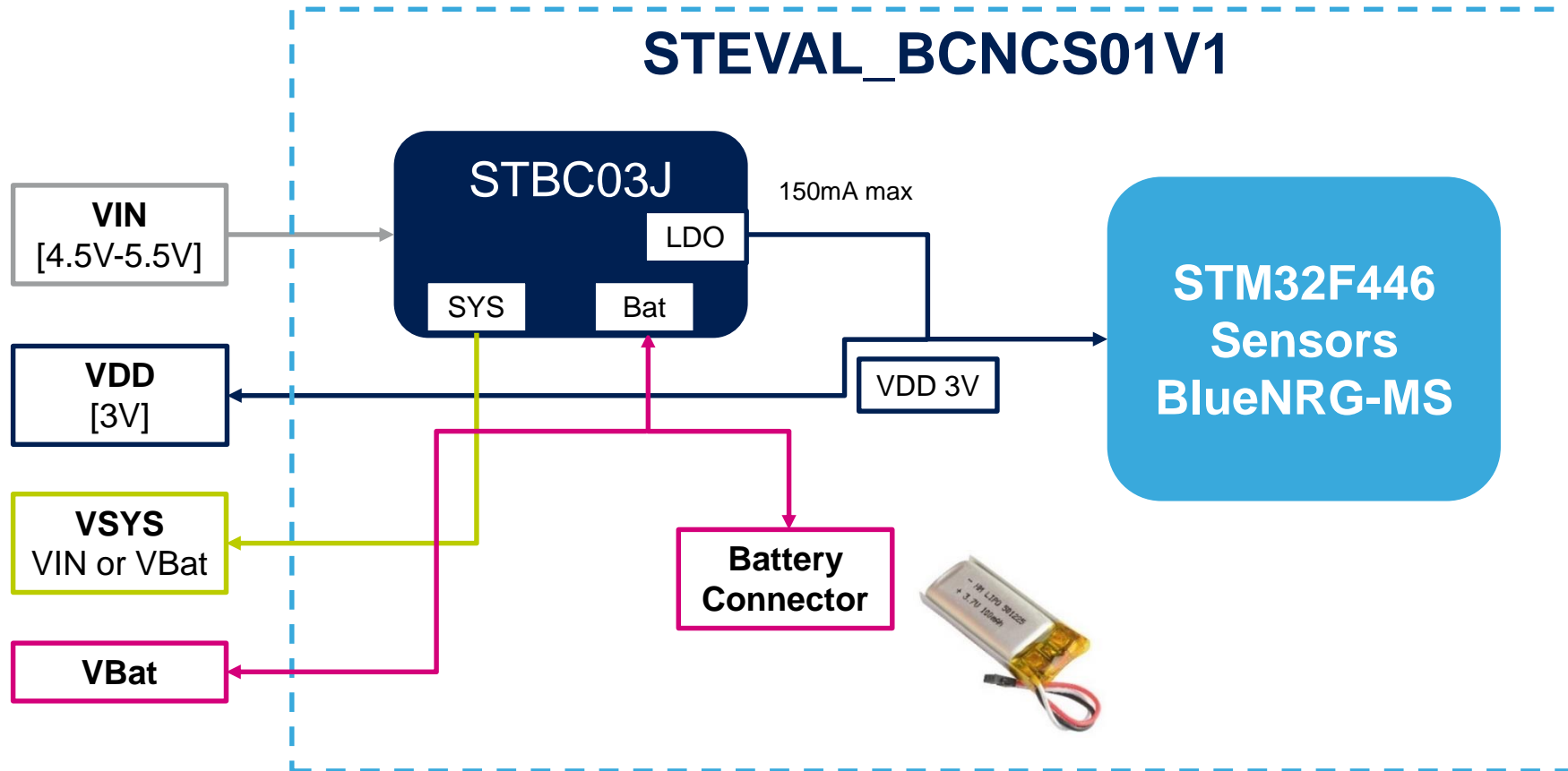
BlueCoin Architecture



Coming in June 2017

BlueCoin Power Supply

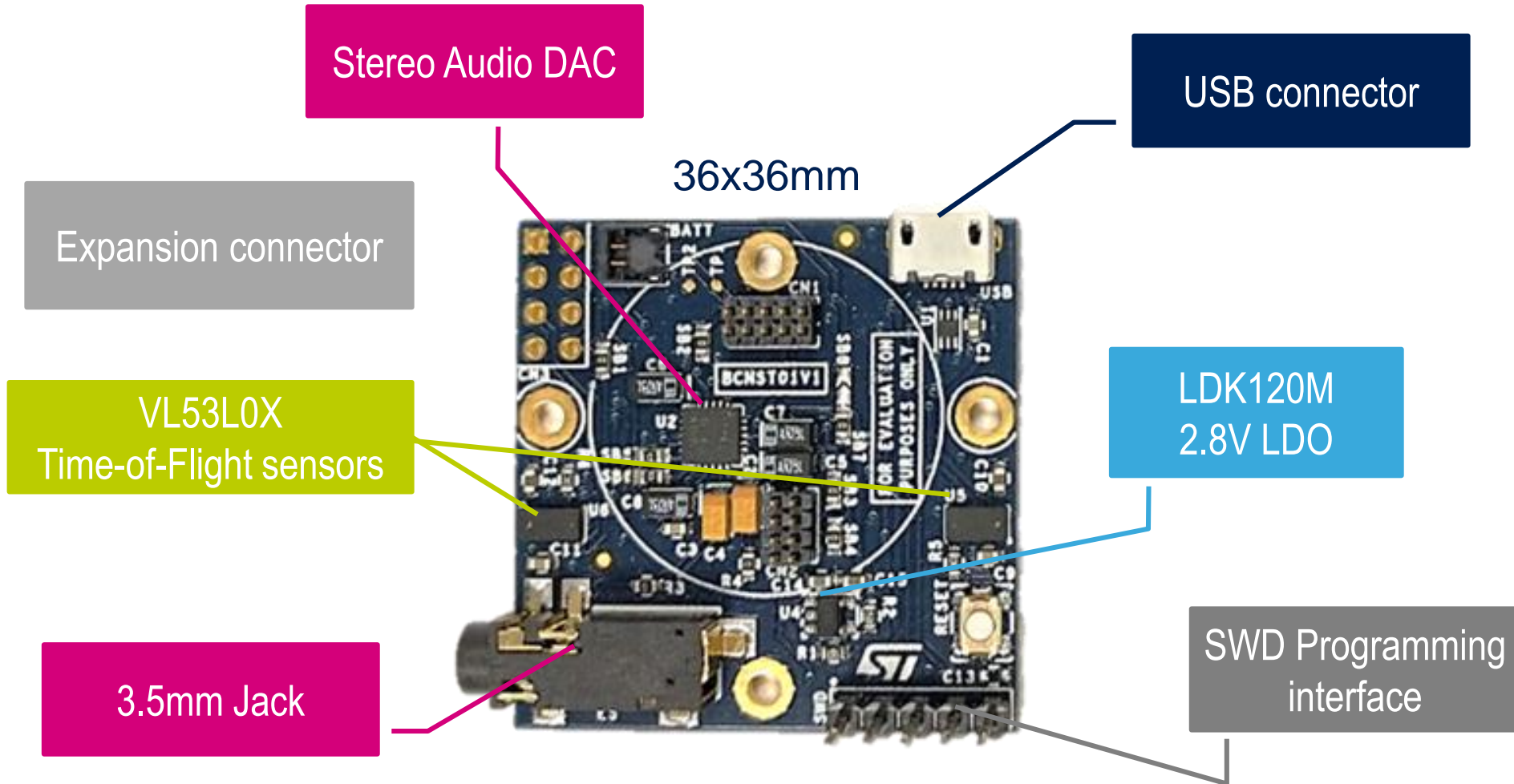
12



Coming in June 2017

STEVAL-BCNST01V1 - CoinStation

8

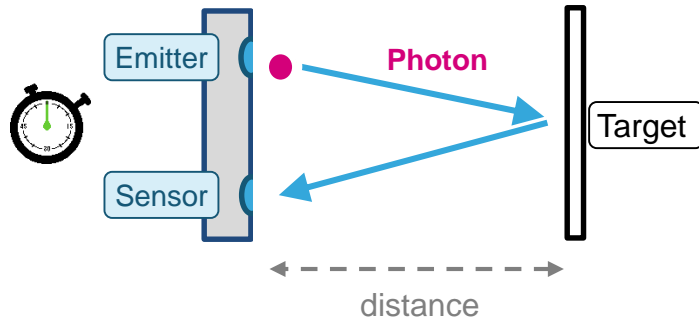


Coming in June 2017

VL53L0X FlightSense™

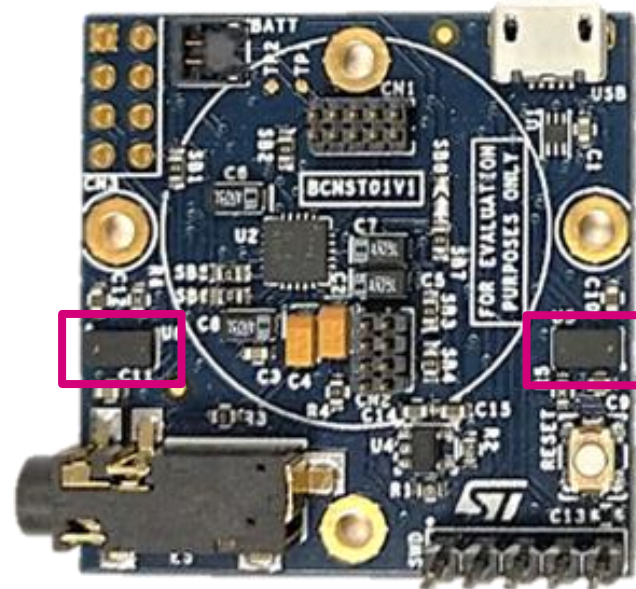
14

FlightSense™ Principle



$$\text{Measured distance} = \text{Photon travel time / 2} \times \text{Speed of light}$$

CoinStation



Time-of-Flight

Time-of-Flight: VL53L0X

Distance measurement	Ranging up to 2 meters
Field of View	25 degrees
Accuracy	+/-3 % (*)
Programmable modes	3 modes in API (High-speed, long distance, high accuracy)
Small all-in-one module	2.4 x 4.4 x 1 mm
Low power consumption	HW stdby <5uA Ranging: 20mW (average at 10Hz with 33ms ranging sequence)

Coming in June 2017

STEVAL-BCNCR01V1 – uCradle

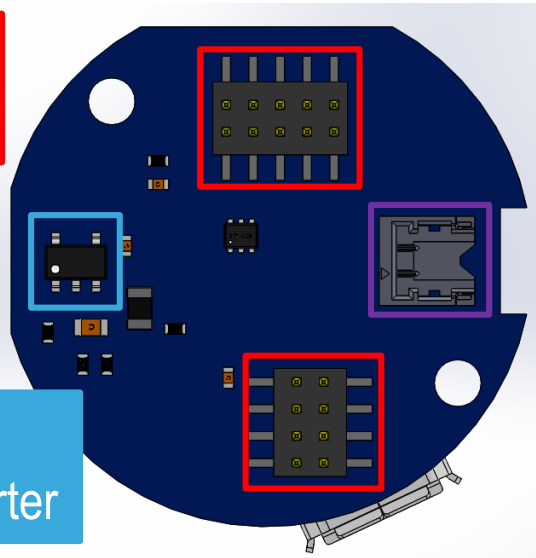
15

Support for standalone operation

TOP VIEW

BlueCoin
Connectors

ST1S12XX
3.3V DCDC converter



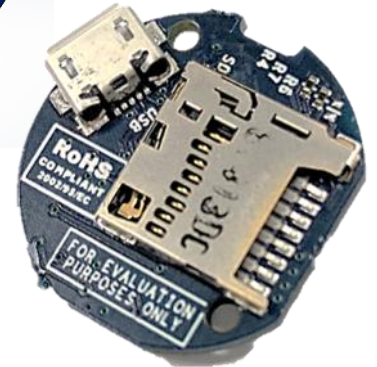
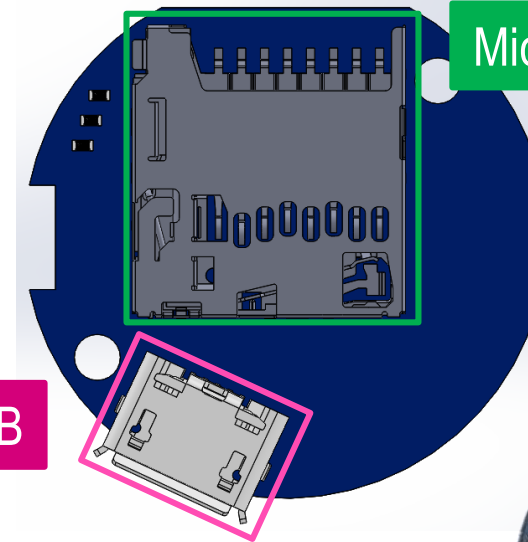
Battery
Connector



BOTTOM VIEW

Micro SD Card

Micro USB



Plastic Case



Coming in June 2017

Integrated Development Platform

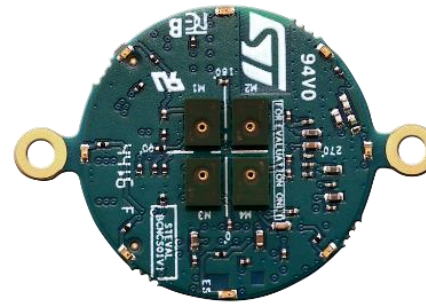


STM32 Open
Development
Environment

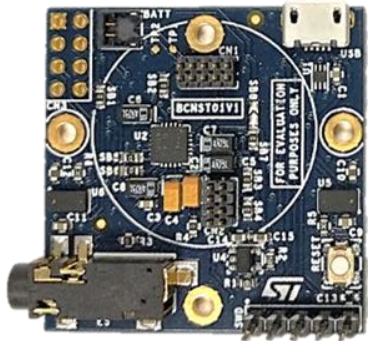
open.AUDIO
open.MEMS
open.RF



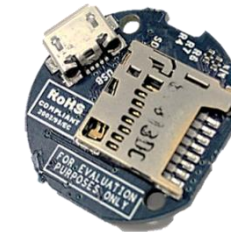
Core System



Coin Station



Cradle

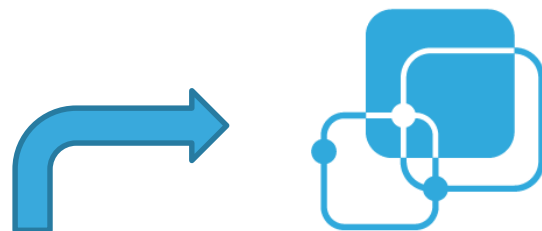


Memory

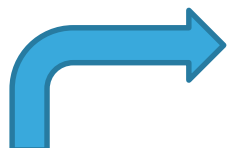
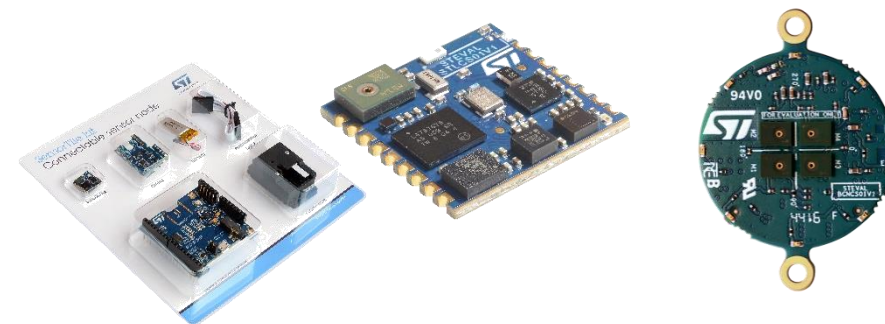


Entry Level to Advanced Audio in 3 steps

17



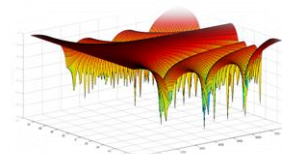
*Integrated
Development
Platforms*



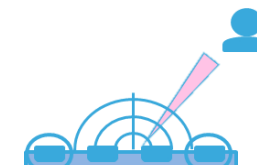
*Advanced
Free-Licensed
Premium
libraries*



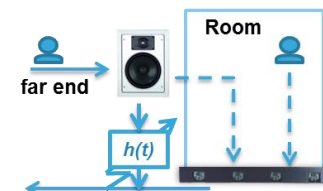
Audio Over BLE



Beamforming



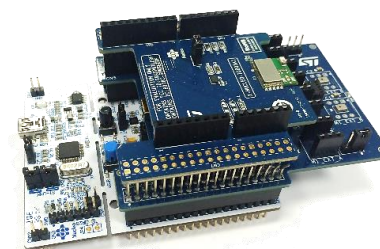
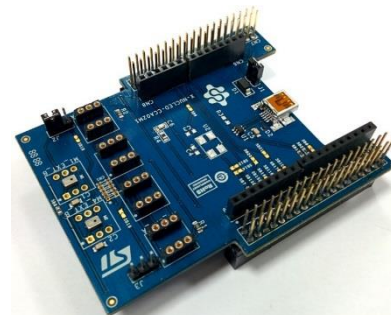
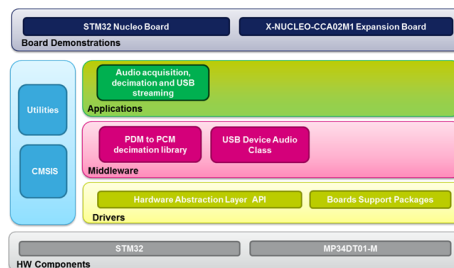
**Source
Localization**



**Acoustic
Echo-Cancellation**

MEMS microphones on Function Packs

open.AUDIO



BlueCoin compatible software

Software Free Download from www.st.com in June 2017

- **STSW-BCNKT01**
 - Embedded software examples for BlueCoin firmware package, including sensor data streaming via USB and BLE, data logging on SD card, gesture recognition, audio acquisition and playback
- **FP-SNS-ALLMEMS1** (former BLUEMICROSYSTEM2)
 - IoT node with BLE connectivity, digital microphone, environmental and motion sensors, motion and audio middleware libraries
- **FP-AUD-SMARTMIC1** (former SMARTACOUSTIC1)
 - Smart audio IN-OUT software expansion for STM32Cube
- **FP-AUD-BVLINK** (former BLUEVOICELINK1)
 - Bluetooth Low Energy and microphones software expansion for STM32Cube

Spatial Audio Processing

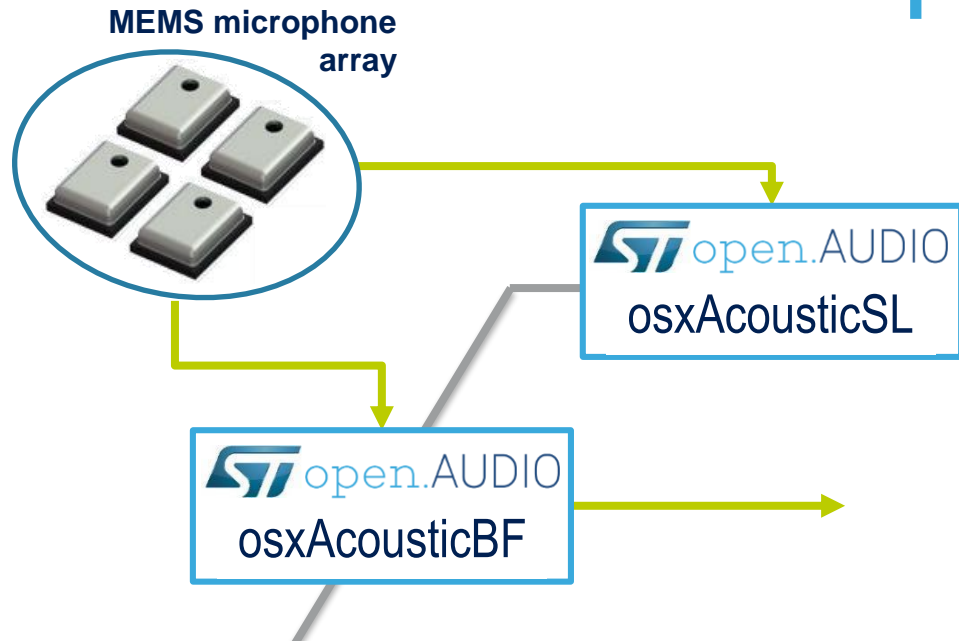
19

OpenSoftware.X

Freely licensed FW Libraries for STM32

open.AUDIO

www.st.com/openaudio



Beamforming: **osxAcousticBF**

Spatial Filter

Outputs the Audio that comes from a **given direction**

Adaptively **cancels** audio signals coming from **other directions**

Sound Localization: **osxAcousticSL**

Estimates the **Direction of Arrival** of the **Main sound source**

Independent from beamforming

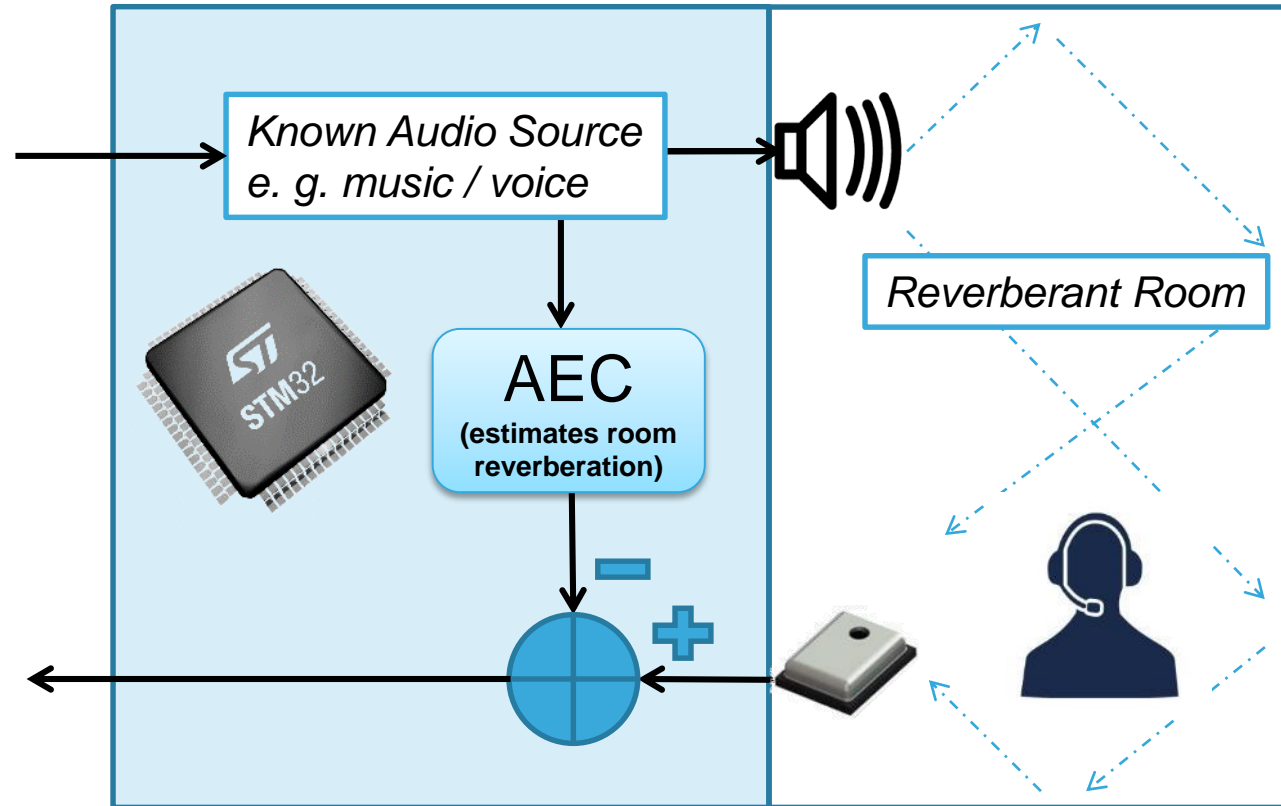
May **control** the beam direction

Acoustic Echo Cancellation

20

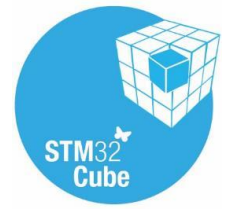
Removes echo of playback audio in speech capture application

- ✓ Single Microphone application
- ✓ STM32 is connected to both the microphone and the loudspeaker



The Open.AUDIO AEC library is an optimized STM32 port based on the Open Source project Speex:

<http://www.speex.org/>

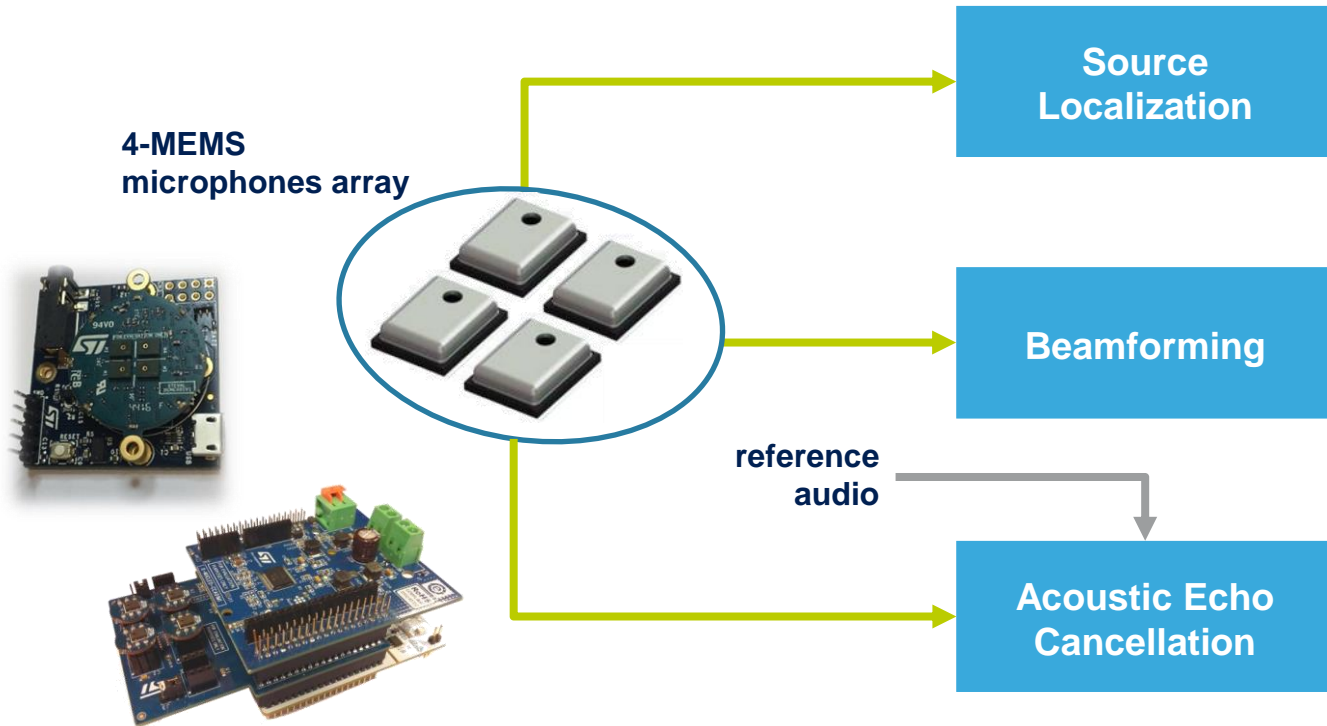


Putting together SW libraries

OpenSoftware.X SmartAcoustic1

21

- Example project in source code built on STM32Cube software technology
- Includes acoustic Beam Forming, Echo Cancellation, and Source Localization.
- Immediate test and performance evaluation



- User-selectable angle resolution
 - User-selectable activation threshold
 - Based on 4 MEMS microphones
 - 360° localization range
-
- User-selectable beam direction
 - User-selectable beamforming algorithm
 - Based on 4 MEMS microphones
 - GUI highlights the chosen microphone couple
-
- Based on a single MEMS microphone
 - Reference audio is stored on STM32 FLASH
 - Uses Audio OUT to play back audio while streaming cleaned speech on USB

Coming in June 2017

FP-AUD-SMARTMIC1 - Beamforming

AudioModule Serial

CONNECTION

COM Devices: COM49

Close COM Port

OUTPUT LEVEL

25

Mute Output

MIC STREAMING

Volume: 24 dB

Mic Selection: M1 + M2

Enable Gesture Volume Control

☒ BEAMFORMING

Beam Direction: Direction 3

Beam Type: Strong

Enable Gesture Control

dB NOISE: 53 dB SPL

Set Offset: 0

ASR: ---

AEC

Denoiser

life.augmented

Beamforming = spatial filter
Record only sounds arriving from
the selected direction

Audacity

File Edit View Transport Tracks Generate Effect Analyze Help

4.0 5.0 6.0 7.0 8.0 9.0 10.0 11.0 12.0 13.0

1.0 0.5 0.0 -0.5 -1.0

1.0 0.5 0.0 -0.5 -1.0

Omnidirectional mic

Beamforming output

Project Rate (Hz): 16000

Selection Start: 00 h 00 m 00.000 s

End Length: 00 h 00 m 00.000 s

Audio Position: 00 h 00 m 00.000 s

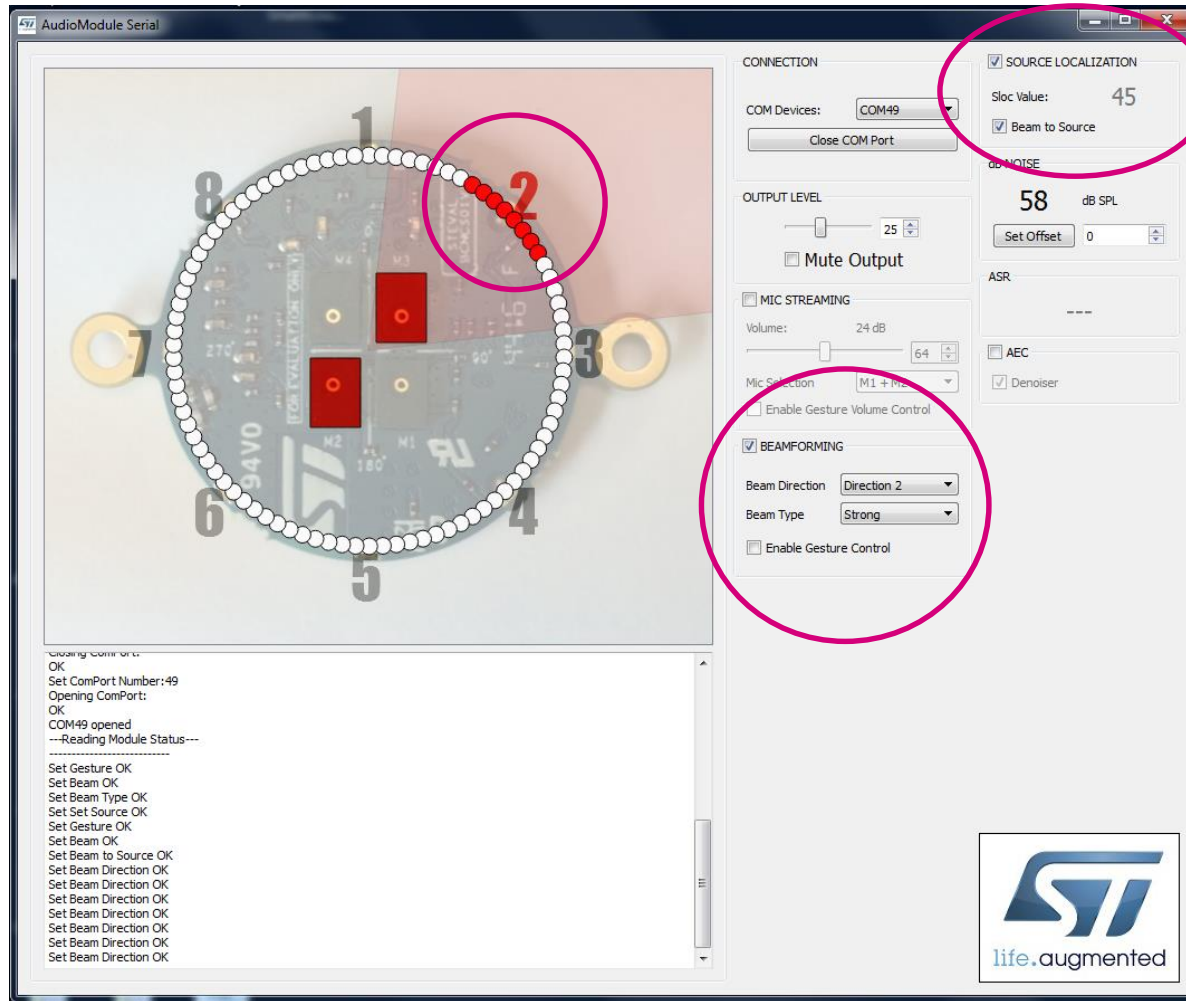
Disk space remains for recording 134 hours and 12 minutes.

Actual Rate: 16000

Coming in June 2017

FP-AUD-SMARTMIC1 - BeamToSource

23

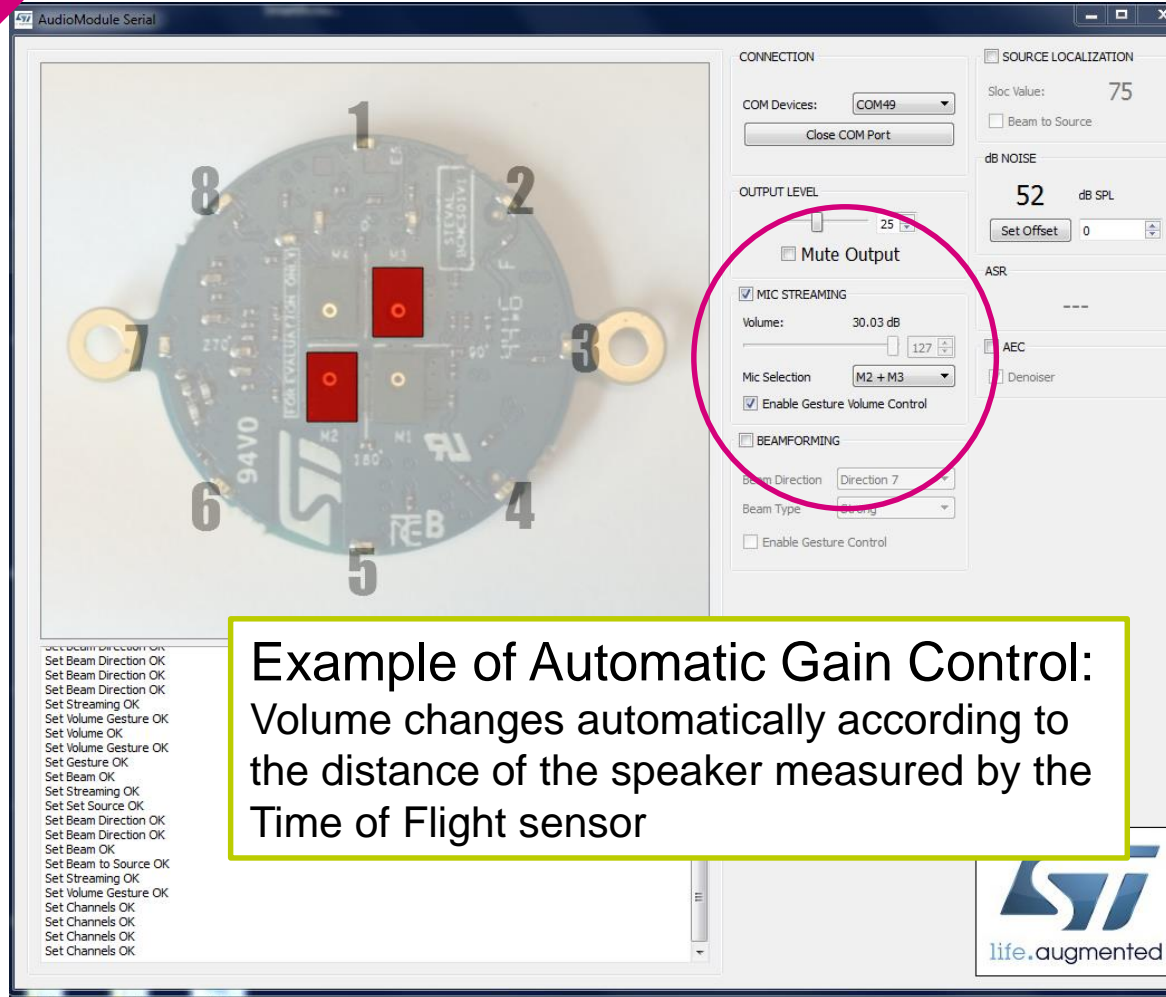


- Select the desired Beamforming
- Switch on the Source Localization
- Beam to Source can understand the source direction and select the related mics

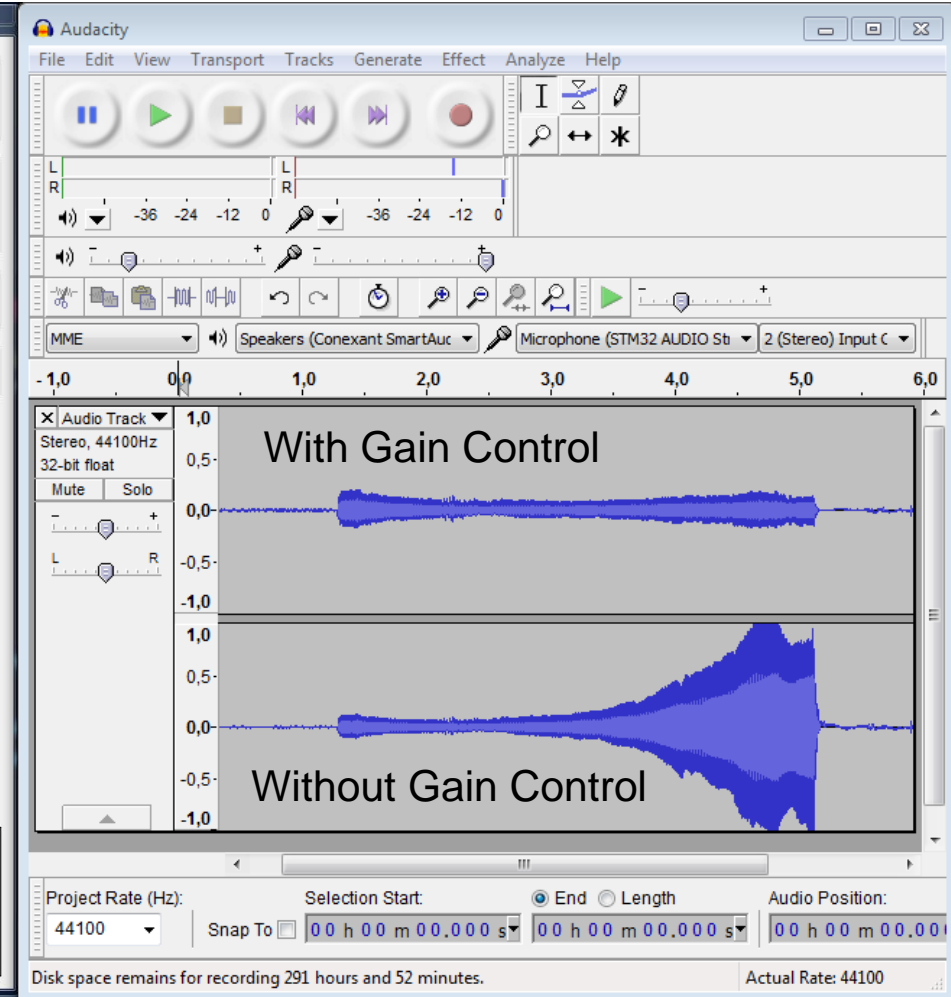
Coming in June 2017

Time-Of-Flight Gain Control

24



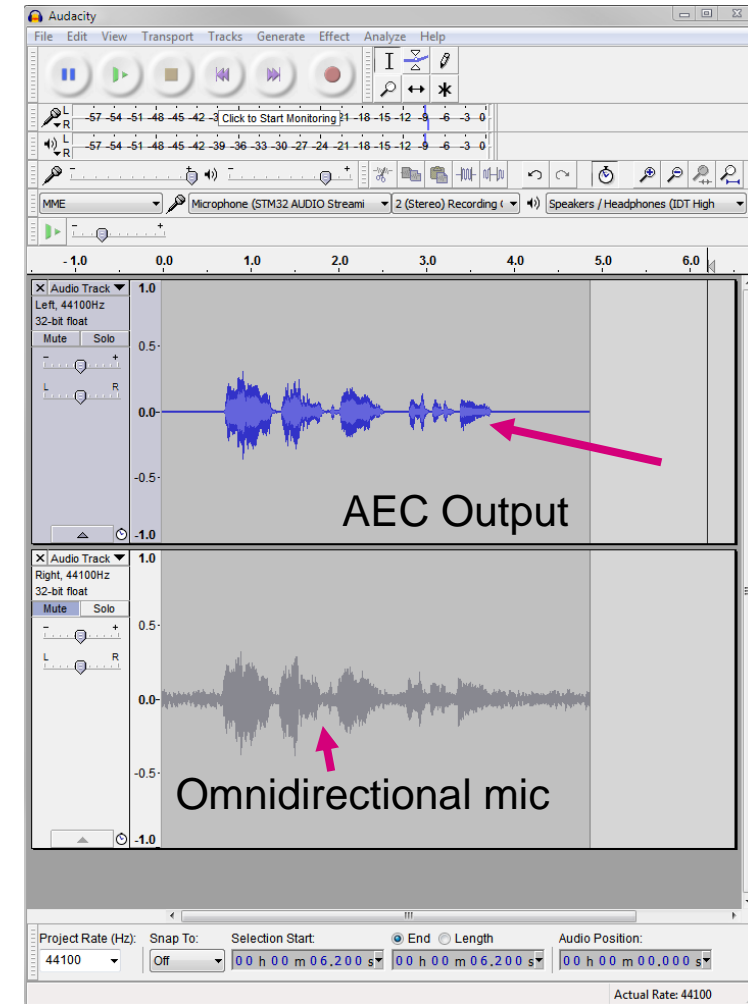
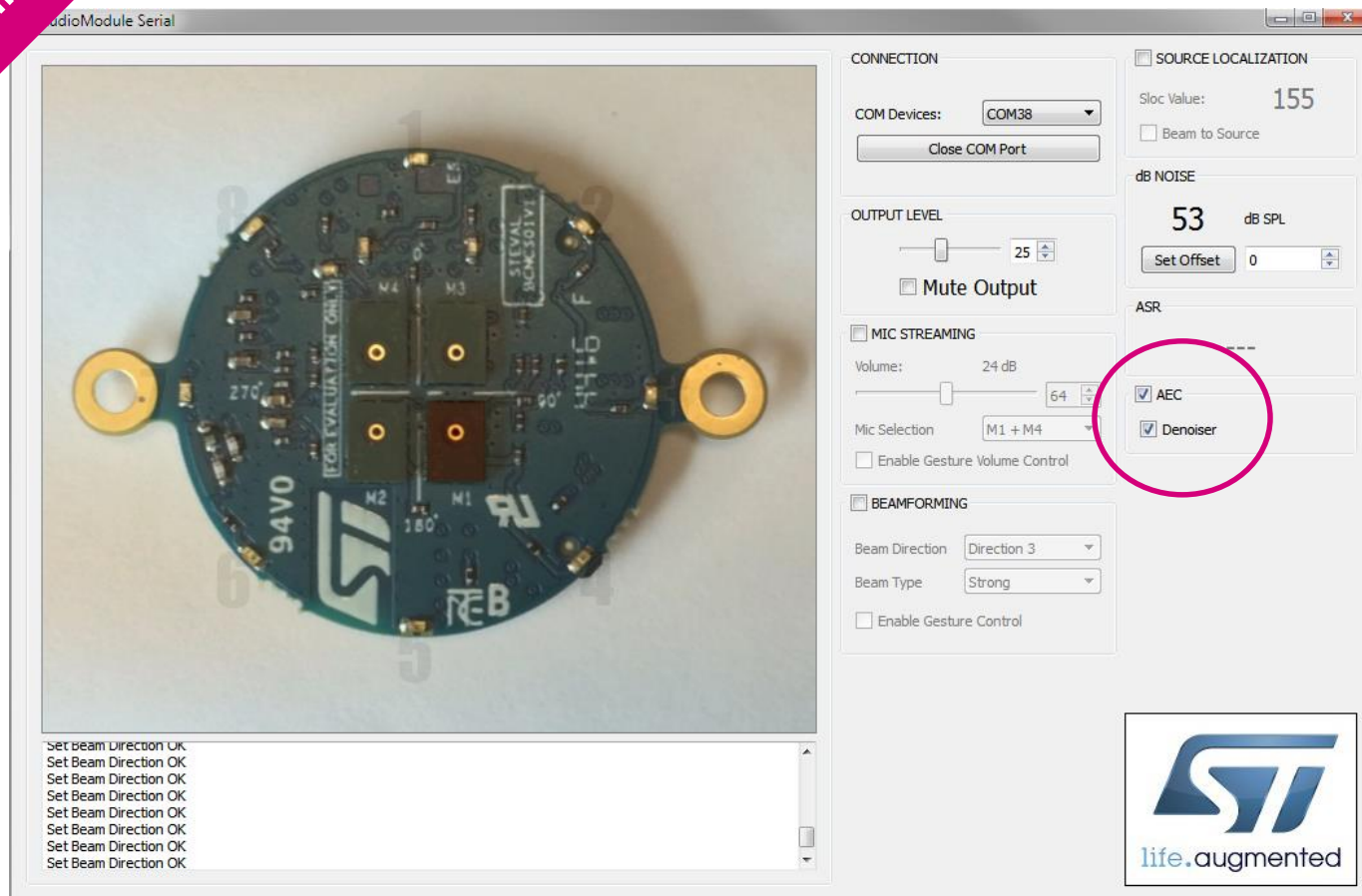
Example of Automatic Gain Control:
Volume changes automatically according to
the distance of the speaker measured by the
Time of Flight sensor



Coming in June 2017

Acoustic Echo Cancellation

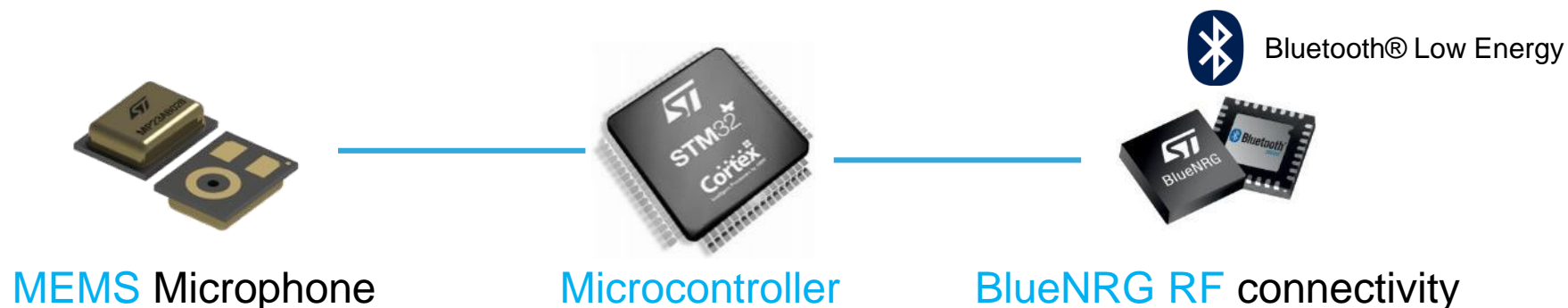
25



BlueVoice: audio over Bluetooth 4

26

The ST HW and SW solution for
Ultra low-power Voice streaming over Bluetooth Low-Energy

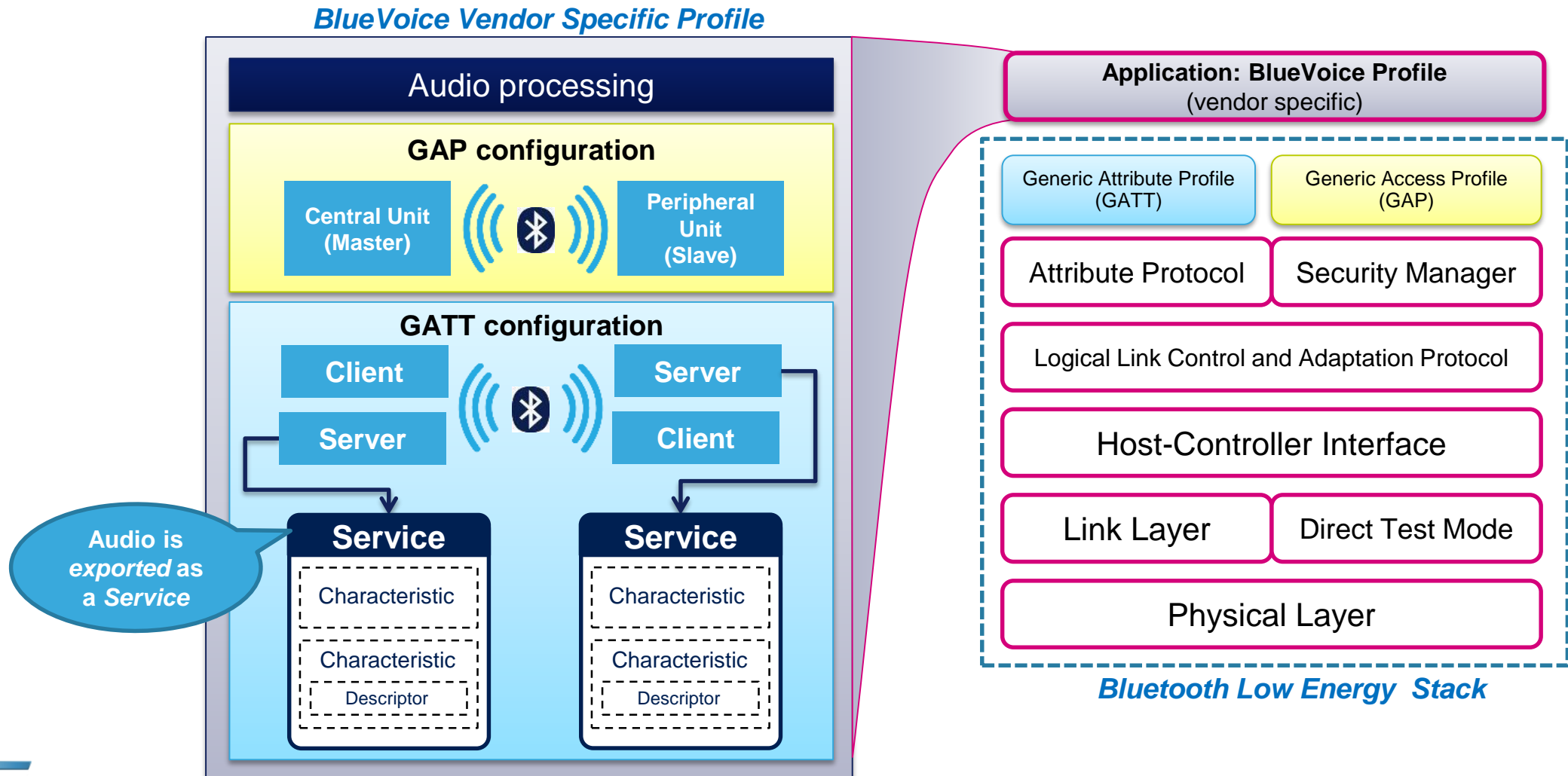


STM32 Signal Processing and Application **Firmware & Software**

BLUEVOICELINK	BLE and microphone reference application based on STM32Cube
OSXBLUEVOICE	Voice-over-BLE vendor-specific profile library for STM32 and BlueNRG
BLUEMICROSYSTEM	Voice and Sensor data over a BLE link to an Android - iOS Smartphone App
BlueMS, BlueST-SDK	Bluetooth Smart and Sensors Technology Application for Android and iOS

BlueVoice Mapping over Standard Bluetooth 4.0 protocol stack

27



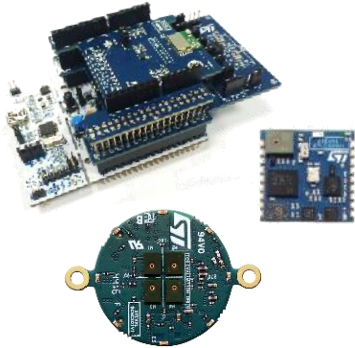
ST BlueMS & BlueVoice library

28

BlueVoice Service Integration in BlueMicrosystem environment



ST BlueMS available on Google Play and App Store

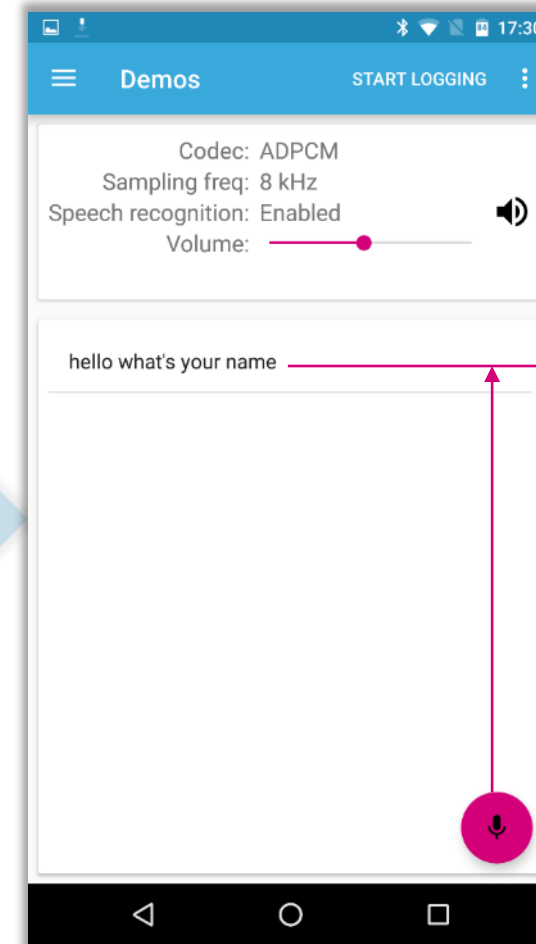


BlueVoiceLink1 2.0.0 - Peripheral

osxBlueVoice 2.0.0



8 kHz
ADPCM



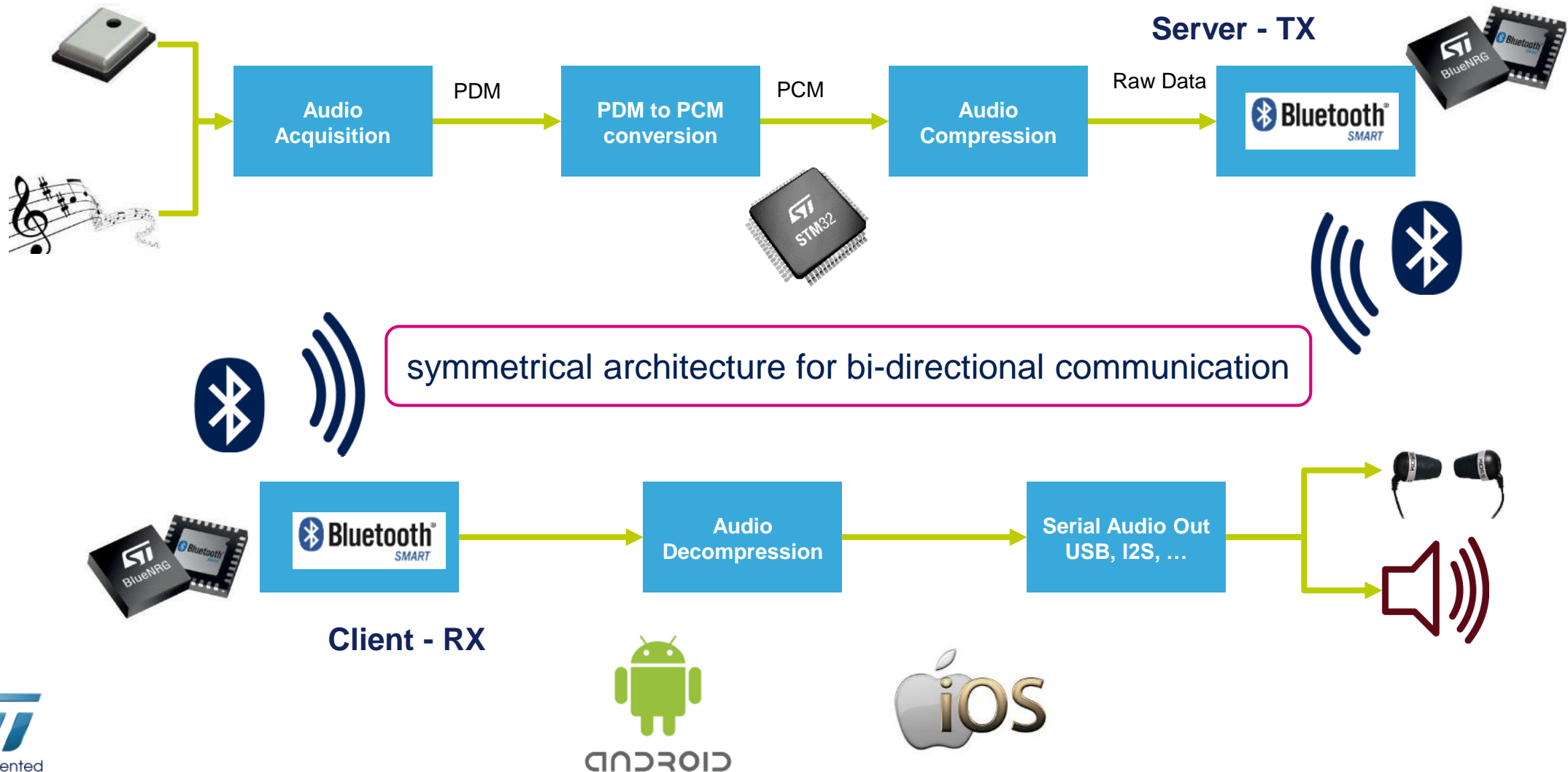
Cloud-based
ASR Service



BlueVoice Architecture:

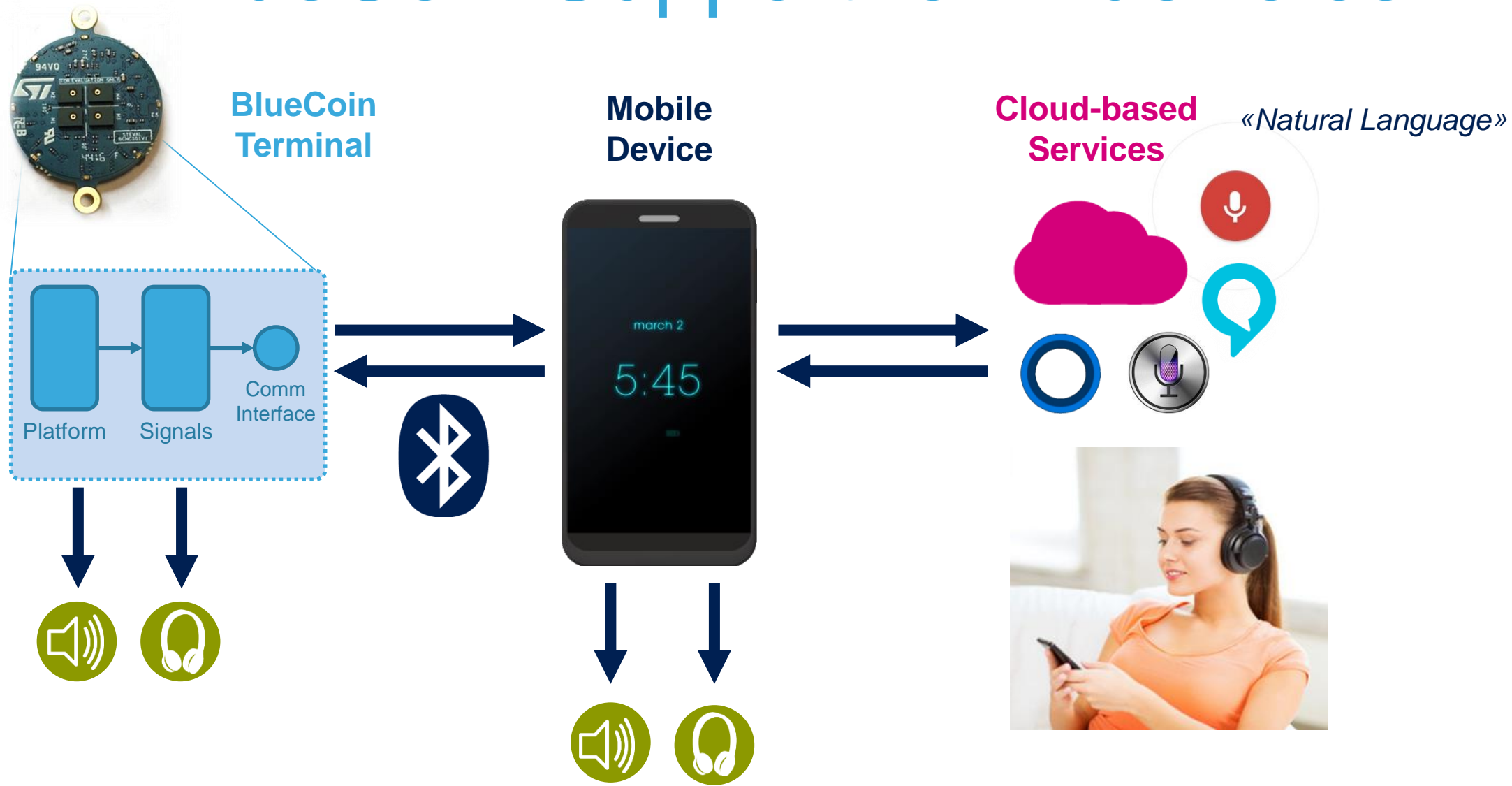
29

Audio processing and transmission



Coming in June 2017

BlueCoin Support for BlueVoice



Coming in June 2017

Samantha VUI

Conversational Interface dev with Android and BlueCoin

